



# AUTOMATED HYGIENE EQUIPMENT



[WWW.MERITECH.COM](http://WWW.MERITECH.COM) | 800-932-7707



# Automated Hygiene Equipment



## CleanTech<sup>®</sup> Automated Handwashing Stations & Enhancements

Pg. 4

## Automated Boot Scrubbers

Pg. 10



## We're looking for partners in hygiene excellence

We're not just an equipment manufacturer, and are seeking long-term partnerships with companies that truly care about the importance of hygiene. When you purchase hygiene equipment from Meritech and partner with us, we ensure you have everything you need for hygiene excellence at your business including:



### Hygiene Solutions Included

Meritech Hygiene Solutions are critically important in ensuring the efficacy of hygiene events delivered by CleanTech<sup>®</sup>. When you partner with us, you'll receive the required hygiene solutions delivered straight to your facility (with free freight!).



### Maintenance & Parts

Ensure optimal performance for your station with regular preventative maintenance provided by a team of technical support specialists. Need a repair or replacement part? Any labor or parts you may need are covered at no additional cost.



### Flexible Payment Options

Getting started with automated hygiene is easy! Try our equipment risk-free for 60 days. Plus when you partner with us we'll work with you to determine the best payment option for your business that includes all necessary solutions, service and parts.



### Consultation & Support

For over 35 years we've been helping businesses achieve their hygiene goals. We'll collaborate with your team to recommend the best automated equipment and it's placement at your business and assist with it's implementation with your staff.

## Why Use Automated Hygiene Equipment?



### Effective

Clinically proven to remove more than 99.9% of harmful pathogens with each 12-second hand wash



### Easy to Use

Standardizes the hygiene process and makes compliance monitoring documentation effortless



### Eco-Friendly

Uses less water and produces less waste while maximizing energy efficiency

### Trusted by Industry Leaders





# CleanTech® Automated Handwashing Stations

## Explore the next evolution in automated hand washing



### EVO One

*Freestanding Single Station*

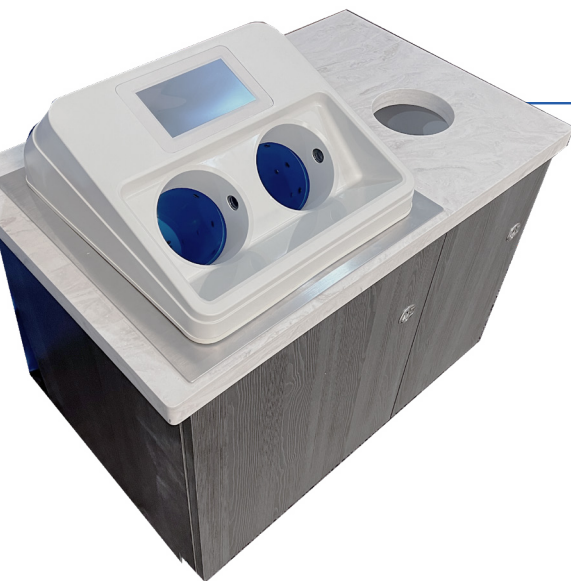
Dimensions:  
18.5" w x 21" l x 47.125" h



### EVO Wall

*Wall-Mounted Station*

Dimensions:  
18.5" w x 21.125" l x 33.75" h



### EVO In-Counter

*Station That Fits Into Any Counter*

Dimensions:  
17.4" w x 18.25" l



### EVO Three

*High-Throughput Triple Station*

Dimensions:  
30.25" w x 69.75" l x 47.125" h

## Which CleanTech® Station is right for you?

Scan the QR code to the right to take our product selection quiz and find out which CleanTech® EVO Station is the best fit for your business in less than a minute.



CleanTech® Automated Handwashing technology has been trusted by companies for over 35 years to protect the health and safety of their employees and consumers. EVO is the next evolution of CleanTech® Automated Handwashing Stations bringing more features and benefits to help with compliance, standardization and support sustainability initiatives in a durable yet aesthetic design that fits into any space.



### Improved Compliance

EVO's smart display with an engaging countdown timer, hygiene training videos and cycle tracking helps to improve compliance and makes team hygiene training effortless.

### Ultimate Peace of Mind

CleanTech® Automated Handwashing Stations have been clinically proven to remove more than 99.9% of pathogens in 12 seconds with zero cross-contamination between users. Over 50 clinical studies have been performed in a 3<sup>rd</sup> party GLP-certified lab to ensure the efficacy of CleanTech® technology.

Download efficacy studies at [Meritech.com/efficacy](https://Meritech.com/efficacy)

### USA-Made and Built to Last

Built with durable and easy-to-clean PC-ABS plastic and stainless steel with an aesthetic design that fits into any commercial or industrial setting.

### Better for the Earth

Unlike a manual hand wash, zero water or solution is wasted during a CleanTech® automated hand wash. EVO solution cartridges are compact for easy storage and can be sent back to us to be refilled, helping to reduce landfill waste and support sustainability efforts.





# Customize your hygiene zone with Enhancements

## Designing automated hygiene zones for over 35 years

### Simultaneous Footwear Hygiene

Achieve more than 99% of pathogen removal from footwear during a 12-second CleanTech® hand wash

#### Sole Clean Sanitizing Pan

Solution evaporates quickly post-application for dry production areas.

#### Wetted Boot Dip Pan

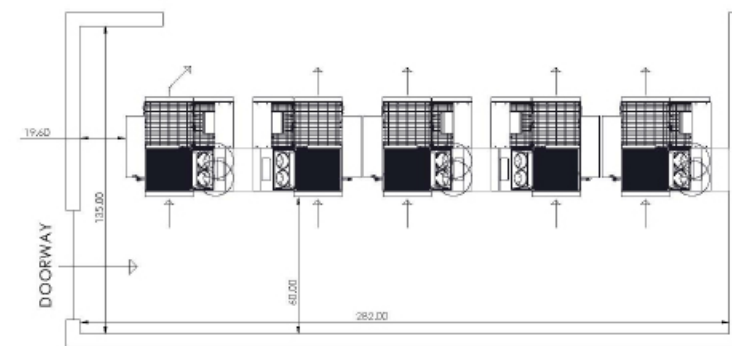
Automatically maintains regulatory recommended PPM

### Controlled Access Turnstile

Ensure employee hygiene compliance with a CleanTech® controlled access turnstile. The turnstile will not permit entrance to production areas until automated hand wash cycle is complete. Compatible with the EVO One station.

We have over 35 years of experience working with customers to create hygiene zones that reduce pathogen spread and prevent the circumvention of critical hygiene steps. Each hygiene zone that we design is focused around the organization's people, place and product.

By looking at what product is produced, how the facility is designed and how people are moving throughout the facility, we can evaluate where



### Let's create your perfect hygiene zone!

Scan the QR code to the right to learn more about our hygiene zone consultation services and to schedule a design consultation with our hygiene experts today.





# Automated Hygiene in Action

“You stick your hands in and it does all the work for you...The easier you make it, the more fun it is, your employees are going to follow that. That’s been really great for us.”



“It’s all about creating a safe product...We know our people are walking in every day with a clean set of hands and a clean set of footwear...We’ve incorporated good equipment, good reliability into our facilities and Meritech’s a part of our family”

## Automated hygiene success stories

We’ve helped customers across many industries, from food processing to childcare, implement automated hygiene into their business. Scan the QR code to hear their success stories.



“We have always had to monitor employees and ensure they were spending the appropriate time to clean their hands effectively. I knew we needed a technology upgrade that provides consistent and sustainable results for every employee, every time.

The CleanTech® Automated Handwashing Stations and XBW Boot scrubber allows us to do just that. It has allowed us to keep our promise to our customers to deliver safe, quality food every day, all day.”



# Automated Boot Scrubbers

## MBW Compact Boot Scrubbers

### MBW Soles-Only

*For use with any footwear*

**Dimensions:**

- 13" horizontal brush length
- 32" w x 66.5" l x 49" h

### MBW 3000

*3" vertical brushes*

**Dimensions:**

- 13" horizontal brush length
- 32" w x 66.5" l x 49" h

### MBW 9000

*9" vertical brushes*

**Dimensions:**

- 13" horizontal brush length
- 32" w x 66.5" l x 49" h



## Take the first step to footwear hygiene excellence

Meritech boot scrubbers make ensuring footwear hygiene easy! Automated boot scrubbers come in both compact and high-throughput designs that automatically maintain the necessary chemical concentration for footwear sanitation. They can be configured for street shoes with the soles-only models or adjusted to scrub up to 9 inches on the sides of rubber boots. All boot scrubbers feature:

- ✓ Photoeye operation
- ✓ Adjustable cycle time
- ✓ Ready indicator light
- ✓ Washing indicator light
- ✓ Emergency stop
- ✓ Hygienic design
- ✓ Tool-less brush removal
- ✓ Soap empty audible alarm
- ✓ Made in the USA
- ✓ Bidirectional brushes

## XBW High Throughput Boot Scrubbers

### XBW Soles-Only

*For use with any footwear*

**Dimensions:**

- 35" horizontal brush length
- 34" w x 82" l x 48" h

### XBW 3.0

*3" vertical brushes*

**Dimensions:**

- 35" horizontal brush length
- 34" w x 82" l x 48" h



## Manufactured in Colorado with USA-Based Support

Since 1986 we've been proudly manufacturing all of our automated hygiene equipment in-house at our Golden, CO headquarters. With in-house support staff and service technicians located around the country we're here to help with installation, training and ensuring your automated hygiene equipment is running at its best.

### Contact Us for more information!

1 (800) 932-7707

info@meritech.com

www.meritech.com/contact





**MERITECH**  
Automating Hygiene Since 1986

[WWW.MERITECH.COM](http://WWW.MERITECH.COM) | 800-932-7707