

smixin™



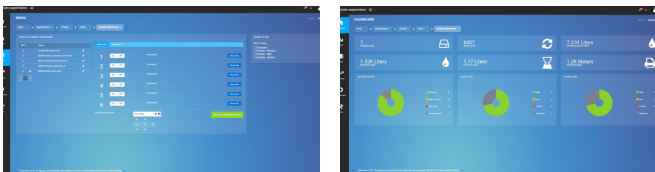
FLOW

THE LOW FLOW FAUCET

Timeless design and modern technology go hand in hand within the Smixin Flow. The precise infrared sensor ensures comfortable control of the water flow. And with its classic-modern design, the faucet fits effortlessly into any washroom. This water-only solution has been developed to complete the range of Smixin solutions that **save 90% of water per handwashing cycle.**

SMART SMIXIN

CONTROL, MONITOR AND ANALYZE YOUR SYSTEMS



The smart dashboard displays data on your usage and water savings.

MODEL	Smixin Flow
DIMENSIONS H x W x D	141mm x 47mm x 204mm 5.6 in x 1.9 in x 8.0 in
WEIGHT	1 kg / 2.2 lbs
MATERIAL	Zinc Nickel-Chrome; PC-ABS
ELECTRICAL Certificates of Power Supply	100-240 V AC CE, cUL/UL, SAA, C-Tick
PLUMBING Water flow and pressure range	G 3/8 Female connection <i>BSP to NPT adapter provided</i> 0.7 LPM (+/- 10%) 1.5 - 10 bar 0.18 GPM (+/- 10%) 22 - 145 psi

Did you know?

The Flow is available on battery (50-60Hz) and on standard power supply (100-240 V AC).



For more information contact Meritech at:
800.932.7707 | smixin@meritech.com