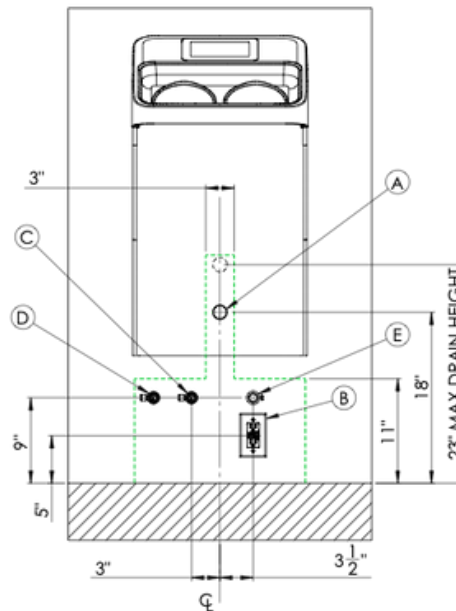
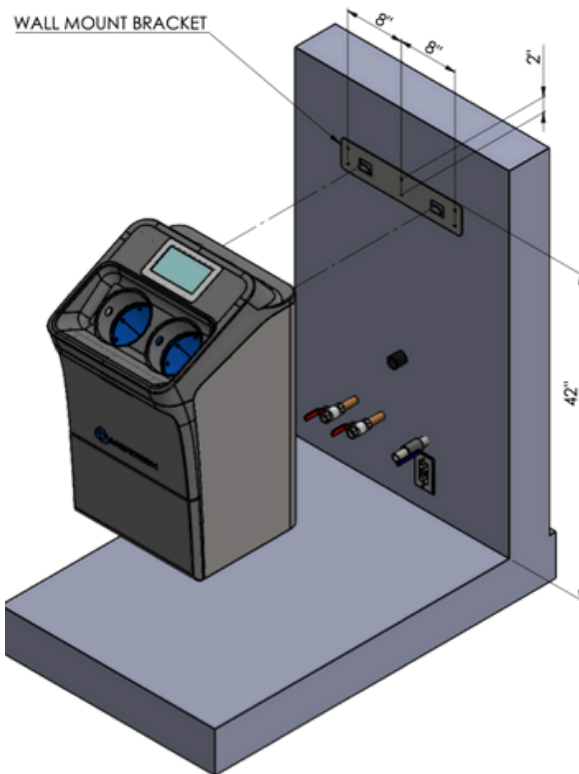


EVO Wall Installation Diagrams and Instructions

Installing the EVO Wall

1. Place top of the wall mount bracket facing up on wall at desired height and location. Recommended height is 42" from finished floor to top of wall mounting bracket, however top of wall mount bracket must be a minimum of 18" above the wall drain. Trace the 6-hole locations from the wall mount bracket onto wall.
2. Install the wall mount bracket with fasteners compatible with wall construction at the 6 traced hole locations. Fasteners length and material should be such that fastener can support a 200-pound vertical force each.
3. Hang the EVO Wall onto the wall mount brackets "Hooks". Verify the system is level and securely attached to the wall.
4. Hook up hot/cold supplies and drain lines. Do not hard pipe to water inlets of the system – Use flexible hoses supplied with system. Plug in power cord. Install solution cartridges per the instructions within this manual or instructions on station. P-Trap to be supplied by customer.
5. Turn water on and inspect for leaks. Repair as necessary

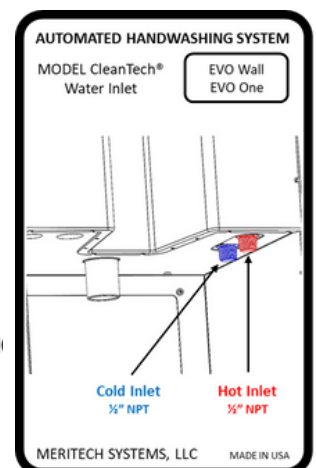


- A: WALL DRAIN STUB (1 1/2" WASTE)
- B: ELECTRICAL OUTLET (110 VAC, GFCI)
- C: COLD WATER INLET (SHUTOFF VALVE W/ 3/8" COMPRESSION MINIMUM; 1/2" FULL PORT BALL VALVE RECOMMENDED)
- D: HOT WATER INLET (SHUTOFF VALVE W/ 3/8" COMPRESSION MINIMUM; 1/2" FULL PORT BALL VALVE RECOMMENDED)
- E: *AIR INLET; 19 CFM @ 25-30 PSI, 50 PSI MAX (1/2" BALL VALVE; PRESSURE REGULATOR SUPPLIED BY CUSTOMER)

FACILITY WATER LINES MUST BE AT LEAST 1/2" I.D. TO SUPPORT FLOW REQUIREMENTS

***AN AIR INLET IS ONLY REQUIRED IF SYSTEMS ARE EQUIPPED WITH THE OPTIONAL AIR CURTAIN FEATURE**

DIMENSIONS SHOWN ARE SUGGESTED LOCATIONS FOR A FLUSH TO WALL INSTALLATION: ALL WATER & ELECTRICAL FACILITIES MUST LIE WITHIN THE DASHED, GREEN AREA



EVO Wall Product Specifications

Dimensions

37 7/8" H x 18 1/2" W x 21" D

Electrical

6' Power cord, 100 - 250 VAC,
NEMA 5-15p - 3.2-amp fuse - Intl. plugs available
84 Watts Consumption (.7 amps)

Plumbing

1/2" MNPT H&C - ASSE 1070 Thermostatic Mixing Valve
Cold Temp = 40° - 80° F/Hot Temp = 120° - 180° F
35 - 100 PSI / 4 GPM minimum (3/8" ID supply line Min.)

Water Supply Hoses Included

Backflow preventor – ASSE 1024

Note: Consult Meritech if connecting more than 2 systems on the same water lines

Drain

1 1/2" Slip Drain P-Trap Included

Ideal wall drain height from floor is 18" (45.7 cm)



Scan the QR Code to access the Digital Owner's Guide, an online library with spec sheets, installation videos, and the full product manual



Important Information:

Codes varies from municipality to municipality, Meritech has designed in the devices listed above to meet most jurisdictions. Conformity and compliance to local and national plumbing / health departments regulations regarding backflow prevention is the responsibility of the installer.

If you should experience any difficulty or are unsure about the installation procedure, we encourage you to consult immediately with Meritech's support team:

Phone: (800) 932-7707
Monday - Friday 8am - 5pm MST

E-mail: support@meritech.com

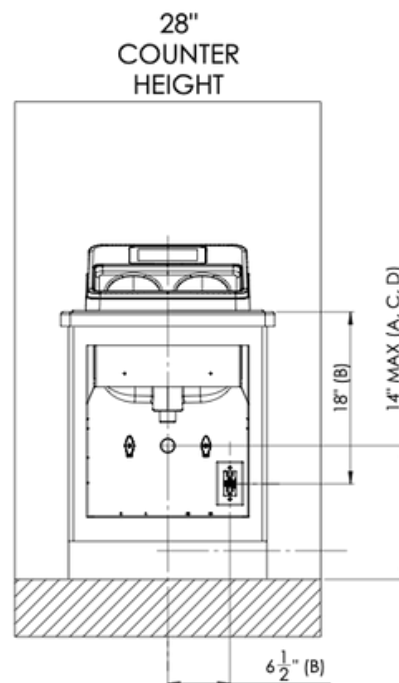
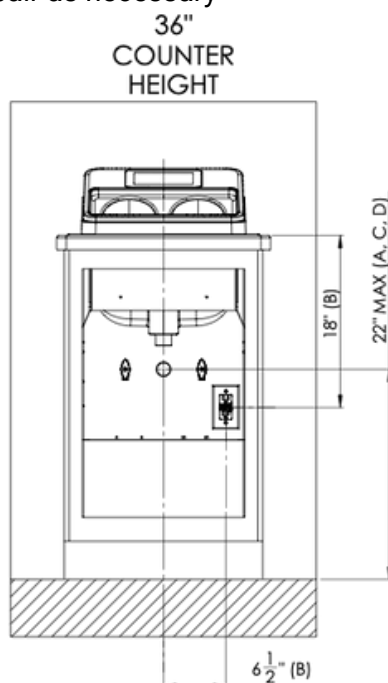
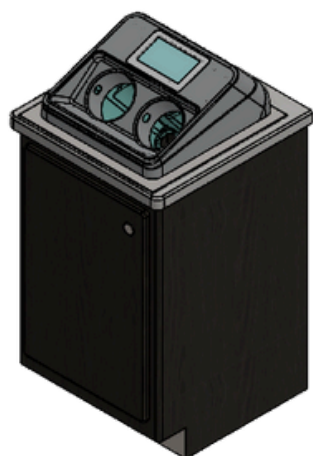


support@meritech.com | 1 (800) 932-7707

EVO In-Counter Installation Diagrams and Instructions

Installing the EVO In-Counter

1. Verify that your facility utility lines, and drain are per the specifications in this manual. If they are not, please contact Meritech Support Team for assistance.
2. Place the counter cutout template on top of your countertop and trace the outline. Using the appropriate tools depending on your countertop material, cutout the hole in the countertop. **CAUTION: maker certain that the front of your cutout template is behind the facia of your cabinet.**
3. Place a small bead (1/8" diameter) of clear silicone on the countertop a 1/2" away from the cutout.
4. Place EVO In-Counter system into the counter cutout hole and press the stainless-steel mounting plate into the bead of silicone.
5. Using a silicone sealant (color of your choosing) around the stainless-steel mounting plate and countertop. **DO NOT SILICONE AROUND EVO TOP COVER.**
6. Hook up hot/cold supplies and drain lines. Do not hard pipe to water inlets of the system – Use flexible hoses supplied with system. Plug in power cord. Install solution cartridges per the instructions within this manual or instructions on station. P-Trap is included in installation kit.
7. Turn water on and inspect for leaks. Repair as necessary



A: WALL DRAIN STUB (1 1/2" WASTE, P-TRAP SUPPLIED BY CUSTOMER)

B: ELECTRICAL OUTLET (120 VAC, GFCI)

C: COLD WATER INLET (3/8" COMPRESSION; 90 DEG STOPCOCK)

D: HOT WATER INLET (3/8" COMPRESSION; 90 DEG STOPCOCK)

- FACILITY LINE MUST BE AT LEAST 1/2" I.D. TO SUPPORT FLOW REQUIREMENTS
- FACILITY WATER AND DRAIN STUB OUTS PROTRUDE FROM WALL NO MORE THAN 4"
- WATER SUPPLY LINES TO BE PROVIDED BY MERITECH

EVO In-Counter Product Specifications



Scan the QR Code to access the Digital Owner's Guide, an online library with spec sheets, installation videos, and the full product manual

Dimensions

26" H x 20" W x 20" D (min. 28" counter height)

Electrical

6' Power cord, 100 - 250 VAC, NEMA 5-15p - 3.2-amp fuse - Intl. plugs available

84 Watts Consumption (.7 amps)

Plumbing

1/2" MNPT H&C - ASSE 1070 Thermostatic Mixing Valve

Cold Temp = 40° - 80° F/Hot Temp = 120° - 180° F

35 - 100 PSI / 4 GPM minimum (3/8" ID supply line Min.)

•Water Supply Hoses Included

•Backflow preventor – ASSE 1024

Note: Consult Meritech if connecting more than 2 systems on the same water lines

Drain

1 1/2" Slip Drain P-Trap Included

Ideal wall drain height from finished floor dependent on counter height:

-Counter height: 36" the drain should be 22" Max. (55.9 cm Max.)

-Counter height 32" - 35" the drain should be: 15" - 18" (38.1 - 45.7 cm)

-Counter height 28" - 31" the drain should be: 11" - 14" (27.9 - 35.6 cm)



Important Information:

Codes varies from municipality to municipality, Meritech has designed in the devices listed above to meet most jurisdictions. Conformity and compliance to local and national plumbing / health departments regulations regarding backflow prevention is the responsibility of the installer.

If you should experience any difficulty or are unsure about the installation procedure, we encourage you to consult immediately with Meritech's support team:

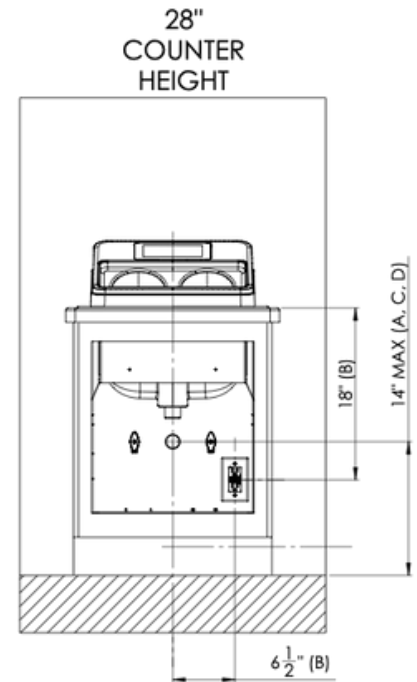
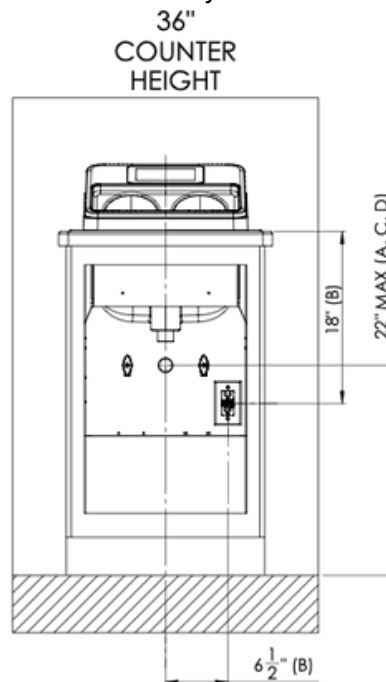
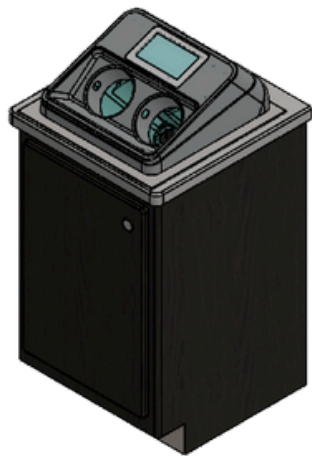
Phone: (800) 932-7707
Monday - Friday 8am - 5pm MST

E-mail: support@meritech.com

EVO In-Counter Installation Diagrams and Instructions

Installing the EVO In-Counter

1. Verify that your facility utility lines, and drain are per the specifications in this manual. If they are not, please contact Meritech Support Team for assistance.
2. Place the counter cutout template on top of your countertop and trace the outline. Using the appropriate tools depending on your countertop material, cutout the hole in the countertop. **CAUTION: make certain that the front of your cutout template is behind the fascia of your cabinet.**
3. Place a small bead (1/8" diameter) of clear silicone on the countertop a 1/2" away from the cutout.
4. Place EVO In-Counter system into the counter cutout hole and press the stainless-steel mounting plate into the bead of silicone.
5. Using a silicone sealant (color of your choosing) around the stainless-steel mounting plate and countertop. **DO NOT SILICONE AROUND EVO TOP COVER.**
6. Hook up hot/cold supplies and drain lines. Do not hard pipe to water inlets of the system – Use flexible hoses supplied with system. Plug in power cord. Install solution cartridges per the instructions within this manual or instructions on station. P-Trap is included in installation kit.
7. Turn water on and inspect for leaks. Repair as necessary



A: WALL DRAIN STUB (1 1/2" WASTE, P-TRAP SUPPLIED BY CUSTOMER)

B: ELECTRICAL OUTLET (120 VAC, GFCI)

C: COLD WATER INLET (3/8" COMPRESSION; 90 DEG STOPCOCK)

D: HOT WATER INLET (3/8" COMPRESSION; 90 DEG STOPCOCK)

- FACILITY LINE MUST BE AT LEAST 1/2" I.D. TO SUPPORT FLOW REQUIREMENTS
- FACILITY WATER AND DRAIN STUB OUTS PROTRUDE FROM WALL NO MORE THAN 4"
- WATER SUPPLY LINES TO BE PROVIDED BY MERITECH

EVO In-Counter Product Specifications



Scan the QR Code to access the Digital Owner's Guide, an online library with spec sheets, installation videos, and the full product manual

Dimensions

26" H x 20" W x 20" D (min. 28" counter height)

Electrical

6' Power cord, 100 - 250 VAC, NEMA 5-15p - 3.2-amp fuse - Intl. plugs available

84 Watts Consumption (.7 amps)

Plumbing

1/2" MNPT H&C - ASSE 1070 Thermostatic Mixing Valve

Cold Temp = 40° - 80° F/Hot Temp = 120° - 180° F

35 - 100 PSI / 4 GPM minimum (3/8" ID supply line Min.)

•Water Supply Hoses Included

•Backflow preventor – ASSE 1024

Note: Consult Meritech if connecting more than 2 systems on the same water lines

Drain

1 1/2" Slip Drain P-Trap Included

Ideal wall drain height from finished floor dependent on counter height:

-Counter height: 36" the drain should be 22" Max. (55.9 cm Max.)

-Counter height 32" - 35" the drain should be: 15" - 18" (38.1 - 45.7 cm)

-Counter height 28" - 31" the drain should be: 11" - 14" (27.9 - 35.6 cm)



Important Information:

Codes varies from municipality to municipality, Meritech has designed in the devices listed above to meet most jurisdictions. Conformity and compliance to local and national plumbing / health departments regulations regarding backflow prevention is the responsibility of the installer.

If you should experience any difficulty or are unsure about the installation procedure, we encourage you to consult immediately with Meritech's support team:

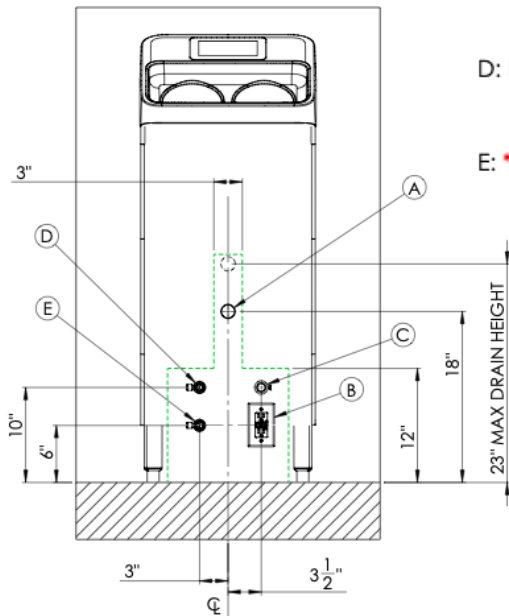
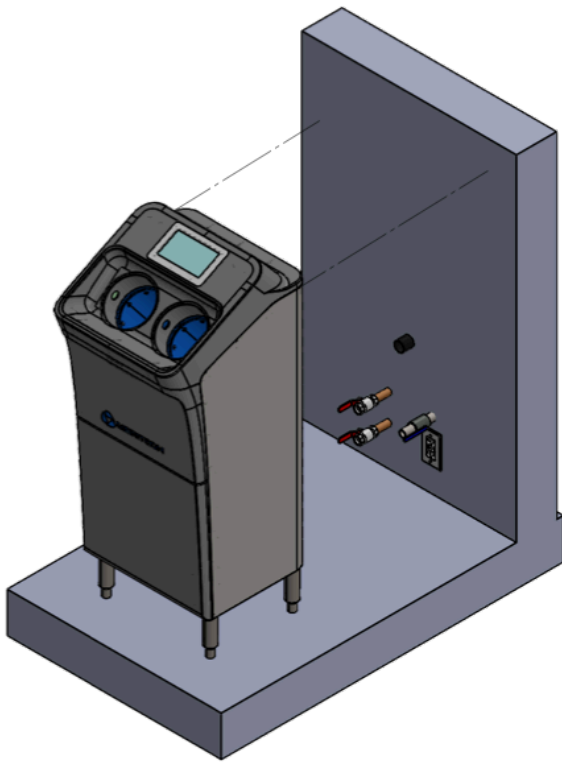
Phone: (800) 932-7707
Monday - Friday 8am - 5pm MST

E-mail: support@meritech.com

EVO One Installation Diagrams and Instructions

Installing the EVO One

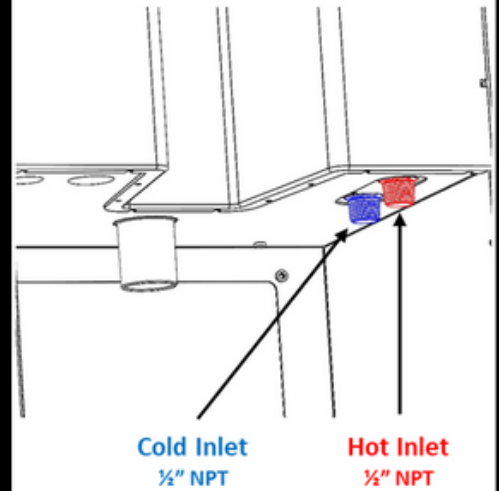
1. The facility will need to provide the appropriate facility utilities of hot & cold-water lines, drain, and electrical per the outlined specifications.
2. Connect the drain line with a P-Trap or route drain line to a floor drain.
3. Connect Hot & Cold-Water line to the water inlets. Do not hard pipe to water inlets of the system – Use flexible hoses supplied with the system.
4. Plug in power cord to facility GFCI electrical outlet.
5. Install solution cartridges
6. Turn water on and inspect for leaks. Repair as necessary
7. Follow system onboarding instructions on touch screen.



AUTOMATED HANDWASHING SYSTEM

MODEL CleanTech®
Water Inlet

EVO Wall
EVO One



MERITECH SYSTEMS, LLC

MADE IN USA

A: WALL DRAIN STUB (1 $\frac{1}{2}$ " WASTE)

B: ELECTRICAL OUTLET (110 VAC, GFCI)

C: COLD WATER INLET (SHUTOFF VALVE W/
3/8" COMPRESSION MINIMUM; 1/2" FULL
PORT BALL VALVE RECOMMENDED)

D: HOT WATER INLET (SHUTOFF VALVE W/
3/8" COMPRESSION MINIMUM; 1/2" FULL
PORT BALL VALVE RECOMMENDED)

E: *AIR INLET; 19 CFM @ 25-30 PSI, 50 PSI
MAX (1/2" BALL VALVE; PRESSURE
REGULATOR SUPPLIED BY CUSTOMER)

**FACILITY WATER LINES MUST BE AT LEAST
1/2" I.D. TO SUPPORT FLOW
REQUIREMENTS**

***AN AIR INLET IS ONLY
REQUIRED IF SYSTEMS ARE
EQUIPPED WITH THE OPTIONAL
AIR CURTAIN FEATURE**

- DIMENSIONS SHOWN ARE SUGGESTED LOCATIONS
- FOR A FLUSH TO WALL INSTALLATION: ALL WATER & ELECTRICAL FACILITIES MUST LIE WITHIN THE DASHED, GREEN AREA

EVO One Product Specifications



Scan the QR Code to access the Digital Owner's Guide, an online library with spec sheets, installation videos, and the full product manual

Dimensions

47 1/8" H x 18 1/2" W x 21" D

Electrical

6' Power cord, 100 - 250 VAC, NEMA 5-15p - 3.2-amp fuse - Intl. plugs available
84 Watts Consumption (.7 amps)

Plumbing

1/2" MNPT H&C - ASSE 1070 Thermostatic Mixing Valve
Cold Temp = 40° - 80° F/Hot Temp = 120° - 180° F
35 - 100 PSI / 4 GPM minimum (3/8" ID supply line Min.)
Water Supply Hoses Included
Backflow preventor – ASSE 1024

Note: Consult Meritech if connecting more than 2 systems on the same water lines

Drain

1 1/2" Slip Drain P-Trap Included
Ideal wall drain height from floor is 18" (45.7 cm)
If equipped with boot dip, floor drain will be required



Important Information:

Codes varies from municipality to municipality, Meritech has designed in the devices listed above to meet most jurisdictions. Conformity and compliance to local and national plumbing / health departments regulations regarding backflow prevention is the responsibility of the installer.

If you should experience any difficulty or are unsure about the installation procedure, we encourage you to consult immediately with Meritech's support team:

Phone: (800) 932-7707
Monday - Friday 8am - 5pm MST

E-mail: support@meritech.com



support@meritech.com | 1 (800) 932-7707

Install Instructions: Boot Dip

EVO One Footwear Enhancement



Scan the QR Code to access the Digital Owner's Guide, an online library with spec sheets, installation videos, and the full product manual

Installing the Boot Dip Enhancement

1. Attached the two supplied clear hoses onto the fittings on the rear of the pan. These hoses push onto the fittings. **Do not hard pipe to these fittings for future cleanability and maintenance.** They are to divert the water from the pan to your required floor drain. If additional hose length is needed, contact Meritech Support Team.
2. Place the boot dip pan in front of the EVO One station, making sure that the pan is centered to the system and sitting level and does not rock.
3. Once the pan is in place, ensure the 2 drain hoses are directed towards the floor drain and that they are flat to prevent the pan from overflowing.
4. Press the unlock button on the touch screen and enter your customer pin number.
5. Once in the main menu, prime the pan by pressing the "Prime Pan" button shown in the photo. The pan will begin to fill, if additional fluid is desired, press the "Prime Pan" button again till the desire level is achieved.

If you should experience any difficulty or are unsure about the installation procedure, we encourage you to consult immediately with Meritech's support team.



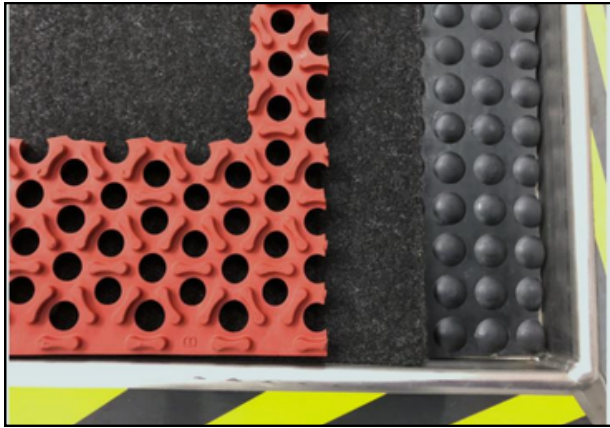
Install Instructions: Sole Clean EVO One Footwear Enhancement



Scan the QR Code to access the Digital Owner's Guide, an online library with spec sheets, installation videos, and the full product manual

Installing the Sole Clean Enhancement

1. Place the Sole Clean pan in front of the EVO One station, making sure that the pan is centered to the system and sitting level and does not rock.
2. Place Sanifect D2 bottle in basket and place pickup tube in bottle. Tube is attached to the system.
3. Place the three mats into the pan, ensuring that they are in the correct order from bottom to top:
 - a. Black bubble mat first
 - b. Grey absorptive mat (with soft side up) next
 - c. Red foot placement mat (with grip knobs upward) on top



4. Verify that the solution tubing is not kinked.
5. Press the unlock button on the touch screen and enter your customer pin number
6. Once in the main menu, prime the pan by pressing the "Prime Pan" button. The pan will begin to fill, if additional fluid is desired, press the "Prime Pan" button again till the desire level is achieved.



If you should experience any difficulty or are unsure about the installation procedure, we encourage you to consult immediately with Meritech's support team.

Install Instructions: Boot Dip EVO Three Footwear Enhancement

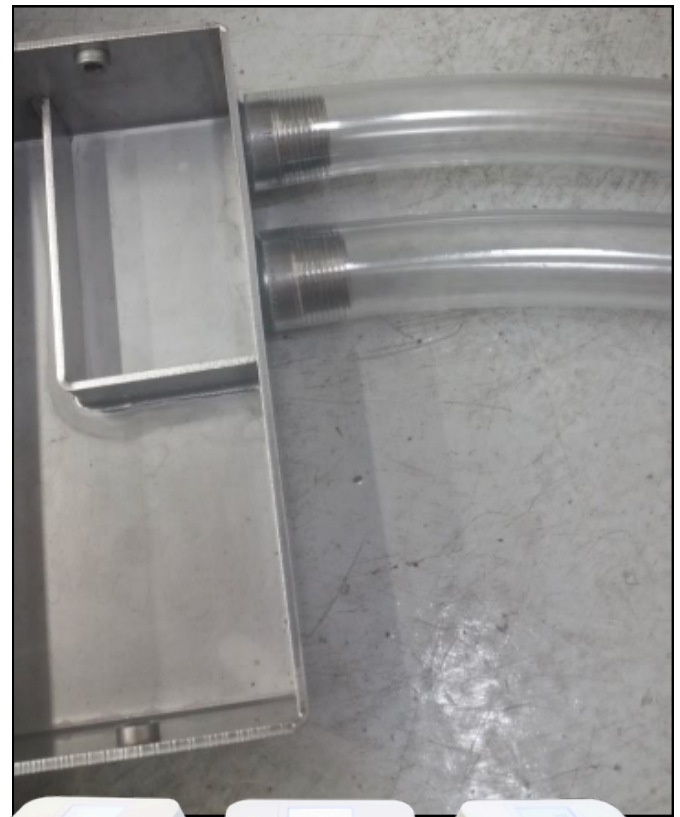


Scan the QR Code to access the Digital Owner's Guide, an online library with spec sheets, installation videos, and the full product manual

Installing the Boot Dip Enhancement

1. Unpack the Enhancement for the EVO Three per the instructions on the box.
2. Attached the two supplied clear hoses onto the fittings on the rear of the pan. These hoses push onto the fittings. **Do not hard pipe to these fittings for future cleanability and maintenance.** They are to divert the water from the pan to your required floor drain. If additional hose length is needed, contact Meritech Support Team.
3. Place the boot dip pan in front of the EVO Three station, making sure that the pan is centered to the system and sitting level and does not rock.
4. Install the two wedges between the left & center and the Right & Center pans.
5. Once the pan is in place, ensure the 2 drain hoses are directed towards the floor drain and that they are flat to prevent the pan from overflowing.
6. Press the unlock button on the touch screen and enter your customer pin number.
7. Once in the main menu, prime the pan by pressing the "Prime Pan" button. The pan will begin to fill, if additional fluid is desired, press the "Prime Pan" button again till the desired level is achieved.

If you should experience any difficulty or are unsure about the installation procedure, we encourage you to consult immediately with Meritech's support team.



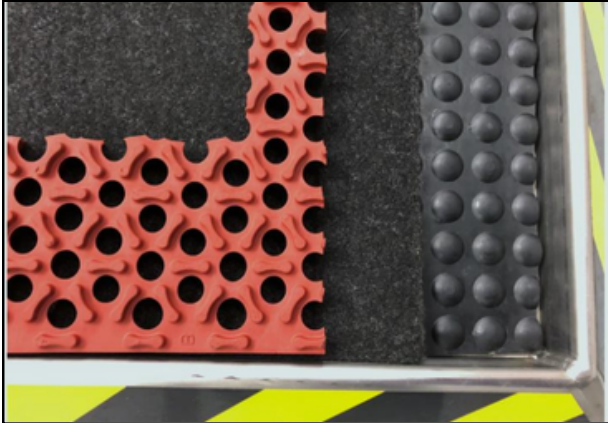
Install Instructions: Sole Clean EVO Three Footwear Enhancement



Scan the QR Code to access the Digital Owner's Guide, an online library with spec sheets, installation videos, and the full product manual

Installing the Sole Clean Enhancement

1. Place the Sole Clean pans in front of the EVO Three station, making sure that the pans are centered to teach bay and sitting level and does not rock.
2. Install the two wedges between the left and center & the right and center pans per the image on the last page
3. Place Sanifect D2 bottle in basket and place pickup tube in bottle. Tube is attached to the system.
4. Place the three mats into the pan, ensuring that they are in the correct order from bottom to top:
 - a. Black bubble mat first
 - b. Grey absorptive mat (with soft side up) next
 - c. Red foot placement mat (with grip knobs upward) on top



4. Verify that the solution tubing is not kinked.
5. Press the unlock button on the touch screen and enter your customer pin number
6. Once in the main menu, prime the pan by pressing the "Prime Pan" button. The pan will begin to fill, if additional fluid is desired, press the "Prime Pan" button again till the desired level is achieved.



If you should experience any difficulty or are unsure about the installation procedure, we encourage you to consult immediately with Meritech's support team.

EVO Three Installation Diagrams and Instructions

Installing the EVO Three

1. The facility will need to provide the appropriate facility utilities of hot & cold-water lines, drain, and electrical per the specifications in this guide.
2. Connect the drain line with a P-Trap or route drain line to a floor drain.
3. Connect Hot & Cold-Water lines to the water hoses included. **Only use the flexible supply hoses installed on the system and never hard pipe to water inlets of the system.**
4. Plug in power cord to facility GFCI electrical outlet.
5. Install solution cartridges per the instructions within this manual or instructions on station.
6. Turn water on and inspect for leaks. Repair as necessary
7. Follow system onboarding instructions on touch screen.

A: WALL DRAIN STUB ($1\frac{1}{2}$ " WASTE, P-TRAP SUPPLIED BY CUSTOMER)

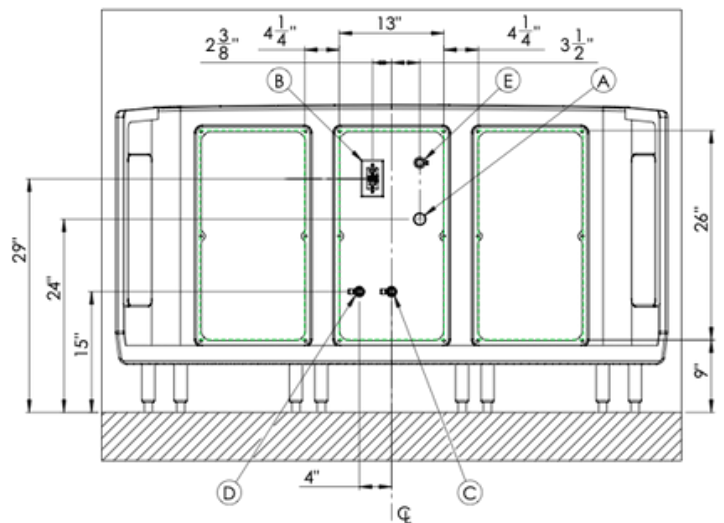
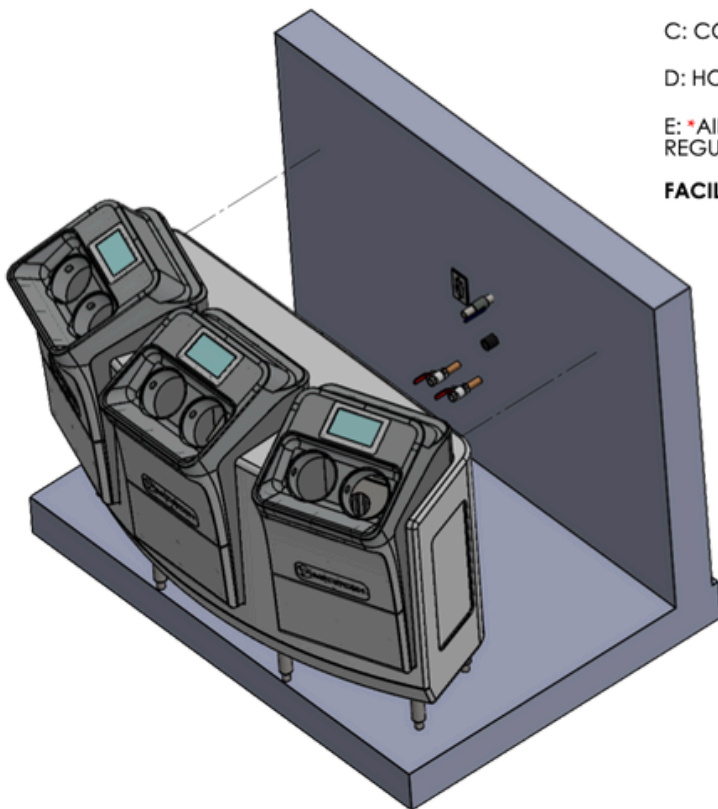
B: ELECTRICAL OUTLET (110 VAC, GFCI)

C: COLD WATER INLET ($\frac{3}{4}$ " FULL PORT BALL VALVE MIN. W/ MGH FITTING)

D: HOT WATER INLET ($\frac{3}{4}$ " FULL PORT BALL VALVE MIN. W/ MGH FITTING)

E: *AIR INLET; 50 CFM @ 25-30 PSI, 50 PSI MAX ($\frac{1}{2}$ " BALL VALVE; PRESSURE REGULATOR SUPPLIED BY CUSTOMER)

FACILITY WATER LINES MUST BE AT LEAST $\frac{3}{4}$ " I.D. TO SUPPORT FLOW REQUIREMENTS



***AN AIR INLET IS ONLY REQUIRED IF SYSTEMS ARE EQUIPPED WITH THE OPTIONAL AIR CURTAIN FEATURE**

- DIMENSIONS SHOWN ARE SUGGESTED LOCATIONS
- FOR A FLUSH TO WALL INSTALLATION: ALL FACILITIES MUST LIE WITHIN THE DASHED, GREEN AREAS

EVO Three Product Specifications



Scan the QR Code to access the Digital Owner's Guide, an online library with spec sheets, installation videos, and the full product manual

Dimensions

47 1/8" H x 60 3/4" W x 30 1/4" D

Electrical

6' Power cord, 100 - 250 VAC, NEMA 5-15p - 3.2-amp fuse - Intl. plugs available

252 Watts Consumption (2.1 amps) – 84 Watts

Consumption (.7 amps) per bay

Plumbing

3/4" Garden Hose H&C - ASSE 1017 Thermostatic Mixing Valve

Cold Temp = 40° - 80° F/Hot Temp = 120° - 180° F

35 - 100 PSI / 12 GPM minimum (4 GPM per bay)

1/2" ID supply line min. for Hot & Cold

Water Supply Hoses Installed on system

Backflow preventor – ASSE 1024

Note: Consult Meritech if connecting more than 2 system on the same water lines

Drain

1 1/2" Sch. 40 drain line – P-Trap Not Included

Ideal wall drain height from floor is 18" (45.7 cm)

If equipped with boot dip, floor drain will be required



Important Information:

Codes varies from municipality to municipality, Meritech has designed in the devices listed above to meet most jurisdictions. Conformity and compliance to local and national plumbing / health departments regulations regarding backflow prevention is the responsibility of the installer.

If you should experience any difficulty or are unsure about the installation procedure, we encourage you to consult immediately with Meritech's support team:

Phone: (800) 932-7707
Monday - Friday 8am - 5pm MST

E-mail: support@meritech.com



support@meritech.com | 1 (800) 932-7707