

CleanTech® EVO Parts List



EVO- C



EVO- W



EVO- 1



EVO- 3



MERITECH

Table of Contents

| Category | Page # |
|----------------------------|---------|
| Parts List Quick Reference | 3 |
| (EVO) ALD | 4 |
| (EVO) Bearings | 5 - 7 |
| (EVO) Belts | 8 |
| (EVO) Covers | 9 - 12 |
| (EVO) Cylinders | 13 |
| (EVO) Electronics | 14 - 19 |
| (EVO) H2O/Air/Temp Valve | 20 - 24 |
| (EVO) Hardware | 25 |
| (EVO) Harnesses | 26 - 31 |
| (EVO) Mechanical | 32 - 39 |
| (EVO) Motor | 40 |
| (EVO) Packaging | 41 |
| (EVO) Plumbing | 42 - 54 |
| (EVO) Sensors | 55 - 57 |
| (EVO) Signs / Graphics | 58 - 61 |
| (EVO) Solution Handling | 62 - 65 |
| (EVO) Solution Pump | 66 - 67 |
| (EVO) Accessory | 68 - 71 |

CleanTech® EVO Quick Reference Parts List

EVO Category

Category Listed on Each Page

EVO System Spare Parts List 11/30/2023

Intl. = International
S = Solution Alt. = Alternate
X = General Acc. = Accessory

EVO Model

| Item # | Item Description | Category | EVO-C | EVO-W | EVO-1 | EVO-3 |
|--------------|--|----------------|-------|-------|-------|-------|
| 301-2002-001 | ALD ASSY., EVO | (EVO) ALD | S | S | S | S |
| 101-2086-001 | IDLER BEARING ASSEMBLY, ALL CLEANTECH | (EVO) Bearings | 6 | 5 | 5 | 15 |
| 301-2042-001 | CYLINDER RETAINER/BEARING ASSY., EVO | (EVO) Bearings | | 2 | 2 | 6 |
| 302-2009-001 | CYLINDER RETAINER/BEARING ASSY., EVO-C | (EVO) Bearings | 2 | | | |
| 962-0001-004 | NYLON IDLER BEARING | (EVO) Bearings | Alt. | Alt. | Alt. | Alt. |
| 962-0001-005 | NYLON/CYLINDER BALL BEARING | (EVO) Bearings | 2 | 2 | 2 | 6 |
| 912-0009-004 | #6 NYLON STANDOFF .25 OD X .312 L | (EVO) Bearings | Alt. | Alt. | Alt. | Alt. |

| | |
|---|-------------------|
| A | All CleanTech EVO |
| C | CleanTech EVO-C |
| W | CleanTech EVO-W |
| 1 | CleanTech EVO-1 |
| 3 | CleanTech EVO-3 |

Quick Reference for Model Part is Used In

Serial Number Reference

| CleanTech EVO Model | Serial No. Sequence |
|---------------------|---------------------|
| EVO-C | ECXXXXXX |
| EVO-W | EWXXXXXX |
| EVO-1 | E1XXXXXX |
| EVO-3 | E3XXXXXX |

Note: If there is a serial number under a specific part, that part is valid for that specific range of serial numbers.

Part Number

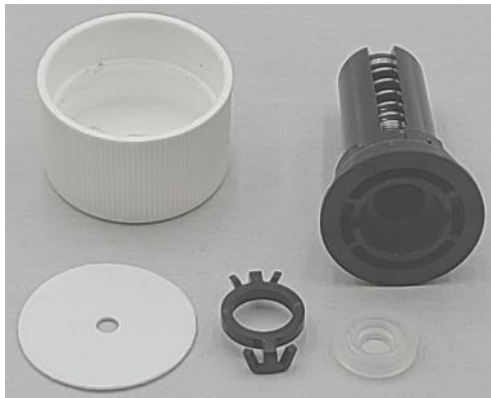
Part Description

Category

Qty. Per EVO Model or Designator Listed Above

EVO ALD Category

| Item # | Item Description | Category | EVO-C | EVO-W | EVO-1 | EVO-3 |
|--------------|------------------|-----------|-------|-------|-------|-------|
| 301-2002-001 | ALD ASSY., EVO | (EVO) ALD | S | S | S | S |



301-2002-001 ALD ASSY., EVO

A All CleanTech EVO

EVO Bearing Category

| Item # | Item Description | Category | EVO-C | EVO-W | EVO-1 | EVO-3 |
|--------------|--|----------------|-------|-------|-------|-------|
| 101-2086-001 | IDLER BEARING ASSEMBLY, ALL CLEANTECH | (EVO) Bearings | 6 | 5 | 5 | 15 |
| 301-2042-001 | CYLINDER RETAINER/BEARING ASSY., EVO | (EVO) Bearings | | 2 | 2 | 6 |
| 302-2009-001 | CYLINDER RETAINER/BEARING ASSY., EVO-C | (EVO) Bearings | 2 | | | |
| 962-0001-004 | NYLON IDLER BEARING | (EVO) Bearings | Alt. | Alt. | Alt. | Alt. |
| 962-0001-005 | NYLON/CYLINDER BALL BEARING | (EVO) Bearings | 2 | 2 | 2 | 6 |
| 912-0009-004 | #6 NYLON STANDOFF .25 OD X .312 L | (EVO) Bearings | Alt. | Alt. | Alt. | Alt. |

EVO Bearing Category



101-2086-001 IDLER BEARING ASSEMBLY, ALL CLEANTECH

| | |
|----------|-------------------|
| A | All CleanTech EVO |
|----------|-------------------|



302-2009-001 CYLINDER RETAINER/BEARING ASSY., EVO-C

| | |
|----------|-----------------|
| C | CleanTech EVO-C |
|----------|-----------------|



301-2042-001 CYLINDER RETAINER/BEARING ASSY., EVO

| | |
|----------|-----------------|
| W | CleanTech EVO-W |
| 1 | CleanTech EVO-1 |
| 3 | CleanTech EVO-3 |

EVO Bearing Category



962-0001-004 NYLON IDLER BEARING

A All CleanTech EVO



912-0009-004 #6 NYLON STANDOFF .25 OD X .312 L

A All CleanTech EVO



962-0001-005 NYLON/CYLINDER BALL BEARING

A All CleanTech EVO

EVO Belts Category

| Item # | Item Description | Category | EVO-C | EVO-W | EVO-1 | EVO-3 |
|--------------|--------------------------------------|-------------|-------|-------|-------|-------|
| 980-0004-001 | BELT .187 X 21 1/2" BLUE TRANSPARENT | (EVO) Belts | 2 | | | |
| 980-0005-001 | BLACK DRIVE BELT, .187" X 22.75" | (EVO) Belts | | 2 | 2 | 6 |



980-0004-001 BELT .187 X 21 1/2" BLUE TRANSPARENT

| | |
|---|-----------------|
| C | CleanTech EVO-C |
|---|-----------------|

EACH=System Uses 2



980-0005-001 BLACK DRIVE BELT, .187" X 22.75"

| | |
|---|-----------------|
| W | CleanTech EVO-W |
| 1 | CleanTech EVO-1 |
| 3 | CleanTech EVO-3 |

EACH=System Uses 2

EVO Covers Category

| Item # | Item Description | Category | EVO-C | EVO-W | EVO-1 | EVO-3 |
|--------------|-------------------------------|--------------|-------|-------|-------|-------|
| 301-2011-001 | TOP COVER ASSY. | (EVO) Covers | | 1 | 1 | 3 |
| 301-2011-002 | TOP COVER ASSY., AIR CURTAIN | (EVO) Covers | | 1 | 1 | 3 |
| 301-5056-001 | PHOTOEYE LENS, EVO | (EVO) Covers | | 4 | 4 | 12 |
| 302-2002-001 | TOP COVER ASSY., EVO-C | (EVO) Covers | 1 | | | |
| 302-5004-001 | PHOTOEYE LENS, IC, EVO | (EVO) Covers | 2 | | | |
| 302-5015-001 | TOP COVER GASKET, IC, EVO | (EVO) Covers | 1 | | | |
| 305-5004-001 | CHASSIS BACK PANEL, EVO THREE | (EVO) Covers | | | | 3 |
| 305-5005-001 | CHASSIS SIDE PANEL, EVO THREE | (EVO) Covers | | | | 2 |
| 303-2004-001 | EVO WALL DOOR ASSY. | (EVO) Covers | | 1 | | 3 |
| 304-2004-001 | EVO-1 DOOR ASSY. | (EVO) Covers | | | 1 | |

EVO Covers Category



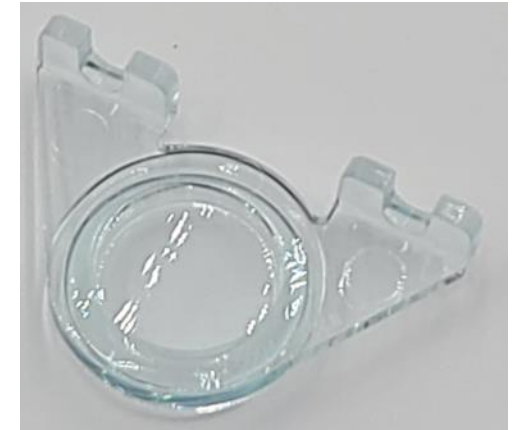
301-2011-001 TOP COVER ASSY.

| | |
|---|-----------------|
| W | CleanTech EVO-W |
| 1 | CleanTech EVO-1 |
| 3 | CleanTech EVO-3 |



301-2011-002 TOP COVER ASSY., AIR CURTAIN

| | |
|---|-----------------|
| W | CleanTech EVO-W |
| 1 | CleanTech EVO-1 |
| 3 | CleanTech EVO-3 |



301-5056-001 PHOTOEYE LENS, EVO

| | |
|---|-----------------|
| W | CleanTech EVO-W |
| 1 | CleanTech EVO-1 |
| 3 | CleanTech EVO-3 |

EVO Covers Category



302-2002-001 TOP COVER ASSY., EVO-C

C

CleanTech EVO-C



302-5004-001 PHOTOEYE LENS, IC, EVO-C

C

CleanTech EVO-C



302-5015-001 TOP COVER GASKET, IC, EVO-C

C

CleanTech EVO-C

EVO Covers Category



305-5004-001 CHASSIS BACK
PANEL, EVO THREE

| | |
|---|-----------------|
| 3 | CleanTech EVO-3 |
|---|-----------------|



305-5005-001 CHASSIS SIDE PANEL,
EVO THREE

| | |
|---|-----------------|
| 3 | CleanTech EVO-3 |
|---|-----------------|



303-2004-001 EVO WALL DOOR ASSY.

| | |
|---|-----------------|
| W | CleanTech EVO-W |
| 3 | CleanTech EVO-3 |



304-2004-001 EVO-1 DOOR ASSY.

| | |
|---|-----------------|
| 1 | CleanTech EVO-1 |
|---|-----------------|

EVO Cylinders Category

| Item # | Item Description | Category | EVO-C | EVO-W | EVO-1 | EVO-3 |
|--------------|---------------------------|-----------------|-------|-------|-------|-------|
| 301-2010-001 | EVO CYLINDER ASSY. PAIR | (EVO) Cylinders | | 1 | 1 | 3 |
| 302-2003-001 | EVO-C CYLINDER ASSY. PAIR | (EVO) Cylinders | 1 | | | |



302-2003-001 EVO-C CYLINDER ASSY. PAIR

C CleanTech EVO-C



301-2010-001 EVO CYLINDER ASSY. PAIR

| | |
|----------|-----------------|
| W | CleanTech EVO-W |
| 1 | CleanTech EVO-1 |
| 3 | CleanTech EVO-3 |

EVO Electronics Category

| Item # | Item Description | Category | EVO-C | EVO-W | EVO-1 | EVO-3 |
|--------------|--|-------------------|-------|-------|-------|-------|
| 301-3010-001 | TOUCH DISPLAY ASSY. | (EVO) Electronics | 1 | 1 | 1 | 3 |
| 301-3014-001 | ELECTRONICS MODULE ASSY. | (EVO) Electronics | | 1 | 1 | 3 |
| 301-3024-001 | POWER SWITCH ASSY. | (EVO) Electronics | 1 | 1 | 1 | 3 |
| 301-3044-001 | IEC/FUSE POWER ENTRY ASSY., EVO | (EVO) Electronics | 1 | 1 | 1 | 3 |
| 301-7000-001 | CPU PCB ASSY., EVO | (EVO) Electronics | 1 | 1 | 1 | 3 |
| 301-7001-001 | INTERFACE PCB ASSY., EVO | (EVO) Electronics | 1 | 1 | 1 | 3 |
| 301-7002-001 | RECEPTACLE DOSING PCB ASSY., EVO | (EVO) Electronics | 1-2 | 1-2 | 2 | 3-6 |
| 302-3000-001 | ELECTRONICS MODULE ASSY., EVO-C | (EVO) Electronics | 1 | | | |
| 813-0000-006 | 32 GB MICRO SD CARD, 100 MB'S | (EVO) Electronics | 1 | 1 | 1 | 3 |
| 830-1503-150 | 5 X 20MM 3.15 AMP FAST ACTING FUSE | (EVO) Electronics | 1 | 1 | 1 | 3 |
| 860-0001-010 | 12 VDC 60 WATT, 90-264 VAC POWER SUPPLY | (EVO) Electronics | 1 | 1 | 1 | 3 |
| 860-0001-011 | 24 VDC 100 WATT, 90-264 VAC POWER SUPPLY | (EVO) Electronics | 1 | 1 | 1 | 3 |
| 860-0023-002 | USB WIFI DONGLE ADAPTER, 2.4 GHZ | (EVO) Electronics | 1 | 1 | 1 | 3 |
| 860-0026-002 | CR1220 3V BATTERY | (EVO) Electronics | 1 | 1 | 1 | 3 |
| 870-8703-001 | 3-POSITION PIGTAIL WATERPROOF CONNECTOR | (EVO) Electronics | Alt. | Alt. | Alt. | Alt. |
| 870-8703-002 | 3-POSITION WATERPROOF MINI RECEPTACLE | (EVO) Electronics | Alt. | Alt. | Alt. | Alt. |
| 870-8703-003 | SPLICING CONN. LEVER ARM, 12-28 AWG | (EVO) Electronics | X | X | X | X |
| 870-8331-001 | PANEL NUT, SIZE 24, DEUTSCH | (EVO) Electronics | 1 | 1 | 1 | 1 |
| 817-0001-012 | FUSE HOLDER, IEC POWER ENTRY MODULE | (EVO) Electronics | 1 | 1 | 1 | 3 |

EVO Electronics Category



301-3010-001 TOUCH DISPLAY ASSY.

| | |
|---|-------------------|
| A | All CleanTech EVO |
|---|-------------------|



301-3014-001 ELECTRONICS MODULE ASSY.

| | |
|---|-----------------|
| W | CleanTech EVO-W |
| 1 | CleanTech EVO-1 |
| 3 | CleanTech EVO-3 |



301-3024-001 POWER SWITCH ASSY.

| | |
|---|-------------------|
| A | All CleanTech EVO |
|---|-------------------|



301-3044-001 IEC/FUSE POWER ENTRY ASSY., EVO

| | |
|---|-------------------|
| A | All CleanTech EVO |
|---|-------------------|

EVO Electronics Category



301-7000-001 CPU PCB ASSY., EVO

A All CleanTech EVO



301-7001-001 INTERFACE PCB ASSY., EVO

A All CleanTech EVO



301-7002-001 RECEPTACLE DOSING PCB ASSY., EVO

A All CleanTech EVO



302-3000-001 ELECTRONICS MODULE ASSY., EVO-C

C CleanTech EVO-C

(Image above shown with optional Enhancement connector)

EVO Electronics Category



813-0000-006 32 GB MICRO SD CARD, 100 MB'S

A All CleanTech EVO



860-0001-011 24 VDC 100-WATT, 90-264 VAC POWER SUPPLY

A All CleanTech EVO



860-0001-010 12 VDC 60-WATT, 90-264 VAC POWER SUPPLY

A All CleanTech EVO



830-1503-150 5 X 20MM 3.15 AMP FAST ACTING FUSE

A All CleanTech EVO

EVO Electronics Category



860-0023-002 USB WIFI DONGLE ADAPTER, 2.4 GHZ

A All CleanTech EVO



860-0026-002 CR1220 3V BATTERY

A All CleanTech EVO



870-8703-001 3-POSITION PIGTAIL WATERPROOF CONNECTOR

A All CleanTech EVO



870-8703-002 3-POSITION WATERPROOF MINI RECEPTACLE

A All CleanTech EVO

EVO Electronics Category



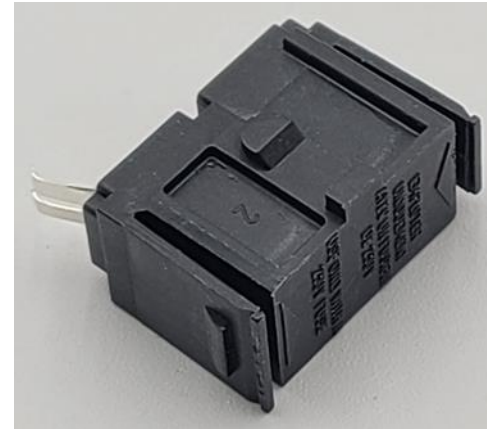
870-8703-003 SPLICING CONN. LEVER
ARM, 12-28 AWG

A All CleanTech EVO



870-8331-001 PANEL NUT, SIZE 24,
DEUTSCH

A All CleanTech EVO



817-0001-012 FUSE HOLDER, IEC POWER
ENTRY MODULE

A All CleanTech EVO

EVO H₂O/Air/Temp Valve Category

| Item # | Item Description | Category | EVO-C | EVO-W | EVO-1 | EVO-3 |
|--------------|--|--------------------------|-------|-------|-------|-------|
| 301-2017-001 | MIXING VALVE ASSY. | (EVO) H2O/Air/Temp Valve | 1 | 1 | 1 | |
| 301-2018-001 | PRESSURE REGULATOR ASSY. | (EVO) H2O/Air/Temp Valve | 1 | 1 | 1 | |
| 301-2019-001 | WATER VALVE ASSY. | (EVO) H2O/Air/Temp Valve | 1 | 1 | 1 | 3 |
| 301-2024-001 | AIR CURTAIN VALVE ASSY. | (EVO) H2O/Air/Temp Valve | | Acc. | Acc. | Acc. |
| 301-2026-001 | BOOT DIP WATER VALVE ASSY. | (EVO) H2O/Air/Temp Valve | | | Acc. | Acc. |
| 301-2032-001 | WATER/BD VALVE ASSY. | (EVO) H2O/Air/Temp Valve | | | Acc. | Acc. |
| 961-0100-018 | 1/2" X 1/2" DUAL CHECK BACKFLOW PREVENTOR | (EVO) H2O/Air/Temp Valve | 1 | 1 | 1 | 3 |
| 961-0200-008 | PRESSURE REGULATOR, 1/2" NPT DOUBLE UNION | (EVO) H2O/Air/Temp Valve | 1 | 1 | 1 | |
| 961-0200-009 | PRESSURE REGULATOR, 3/4" NPT DOUBLE UNION | (EVO) H2O/Air/Temp Valve | | | | 1 |
| 961-0800-007 | 1/2" NPT THERMOSTATIC MIXING VALVE | (EVO) H2O/Air/Temp Valve | 1 | 1 | 1 | |
| 961-0800-008 | 3/4" MNPT THERMOSTATIC MIXING VALVE-BLUE | (EVO) H2O/Air/Temp Valve | | | | 1 |
| 961-0900-036 | 3/8" FNPT 2-WAY SOLENOID VALVE 12 VDC | (EVO) H2O/Air/Temp Valve | | Acc. | Acc. | Acc. |
| 961-0900-043 | 1/2" NPT WATER SOLENOID VALVE, 12 VDC, EVO | (EVO) H2O/Air/Temp Valve | 1 | 1 | 1 | 3 |
| 961-0900-044 | 3/8" NPT WATER SOLENOID VALVE, 12 VDC, EVO | (EVO) H2O/Air/Temp Valve | | | Acc. | Acc. |
| 961-0900-009 | 3/4" MNPT THERMOSTATIC MIXING VALVE-RED | (EVO) H2O/Air/Temp Valve | | | | 1 |

EVO H₂O/Air/Temp Valve Category



301-2017-001 MIXING VALVE ASSY.

| | |
|---|-----------------|
| C | CleanTech EVO-C |
| W | CleanTech EVO-W |
| 1 | CleanTech EVO-1 |



301-2018-001 PRESSURE REGULATOR ASSY.

| | |
|---|-----------------|
| C | CleanTech EVO-C |
| W | CleanTech EVO-W |
| 1 | CleanTech EVO-1 |



301-2019-001 WATER VALVE ASSY.

| | |
|---|-------------------|
| A | All CleanTech EVO |
|---|-------------------|



301-2024-001 AIR CURTAIN VALVE ASSY.

| | |
|---|-----------------|
| W | CleanTech EVO-W |
| 1 | CleanTech EVO-1 |
| 3 | CleanTech EVO-3 |

EVO H₂O/Air/Temp Valve Category



301-2026-001 BOOT DIP WATER VALVE ASSY.

| | |
|---|-----------------|
| 1 | CleanTech EVO-1 |
| 3 | CleanTech EVO-3 |



301-2032-001 WATER/BD VALVE ASSY.

| | |
|---|-----------------|
| 1 | CleanTech EVO-1 |
| 3 | CleanTech EVO-3 |



961-0100-018 1/2" X 1/2" DUAL CHECK BACKFLOW PREVENTOR

| | |
|---|-------------------|
| A | All CleanTech EVO |
|---|-------------------|



961-0200-008 PRESSURE REGULATOR, 1/2" NPT DOUBLE UNION

| | |
|---|-----------------|
| C | CleanTech EVO-C |
| W | CleanTech EVO-W |
| 1 | CleanTech EVO-1 |

EVO H₂O/Air/Temp Valve Category



961-0200-009 PRESSURE REGULATOR,
3/4" NPT DOUBLE UNION

| | |
|---|-----------------|
| 3 | CleanTech EVO-3 |
|---|-----------------|



961-0800-007 1/2" NPT THERMOSTATIC
MIXING VALVE

| | |
|---|-----------------|
| C | CleanTech EVO-C |
| W | CleanTech EVO-W |
| 1 | CleanTech EVO-1 |



961-0800-008 3/4" MNPT THERMOSTATIC
MIXING VALVE

| | |
|---|-----------------|
| 3 | CleanTech EVO-3 |
|---|-----------------|

S/N: E300005 – CURRENT



961-0900-036 3/8" FNPT 2-WAY SOLENOID
VALVE 12 VDC

| | |
|---|-----------------|
| W | CleanTech EVO-W |
| 1 | CleanTech EVO-1 |
| 3 | CleanTech EVO-3 |

EVO H₂O/Air/Temp Valve Category



961-0900-043 1/2" NPT WATER SOLENOID VALVE, 12 VDC, EVO

A All CleanTech EVO



961-0900-044 3/8" NPT WATER SOLENOID VALVE, 12 VDC, EVO

| | |
|---|-----------------|
| 1 | CleanTech EVO-1 |
| 3 | CleanTech EVO-3 |



961-0800-009 3/4" MNPT THERMOSTATIC MIXING VALVE - RED

| | |
|---|-----------------|
| 3 | CleanTech EVO-3 |
|---|-----------------|

S/N: E300001 – E300004

EVO Hardware Category

| Item # | Item Description | Category | EVO-C | EVO-W | EVO-1 | EVO-3 |
|--------------|--|----------------|-------|-------|-------|-------|
| 892-0009-003 | CABLE TIE HOLDER ADHESIVE BACK | (EVO) Hardware | X | X | X | X |
| 892-0027-005 | 1 11/16" CONDUIT CLAMP, PLASTIC | (EVO) Hardware | | | | 2 |
| 995-3154-004 | 10-32 X 1/4" X 1/4" SST, SHOULDER BOLT | (EVO) Hardware | 2 | 2 | 2 | 6 |



892-0009-003 CABLE TIE HOLDER
ADHESIVE BACK

A All CleanTech EVO



892-0027-005 1 11/16" CONDUIT CLAMP,
PLASTIC

3 CleanTech EVO-3



995-3154-004 10-32 X 1/4" X 1/4" SST,
SHOULDER BOLT

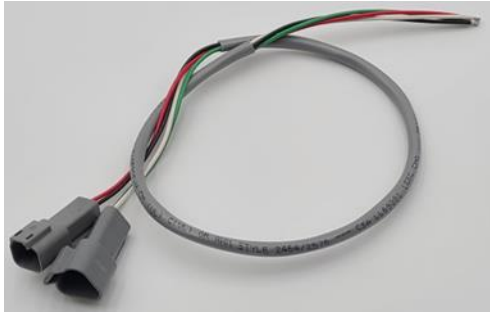
A All CleanTech EVO

See Separate List for Non-Inventory Screws, Nuts, & Etc.

EVO Harnesses Category

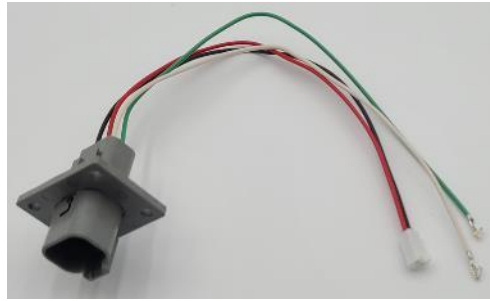
| Item # | Item Description | Category | EVO-C | EVO-W | EVO-1 | EVO-3 |
|--------------|---|-----------------|-------|-------|-------|-------|
| 301-3015-001 | E-MOD POWER HARNESS ASSY. | (EVO) Harnesses | 1 | 1 | 1 | 3 |
| 301-3016-001 | E-MOD MOTOR/VALVE HARNESS ASSY. | (EVO) Harnesses | 1 | 1 | 1 | 3 |
| 301-3017-001 | E-MOD SENSOR HARNESS ASSY. | (EVO) Harnesses | 1 | 1 | 1 | 3 |
| 301-3018-001 | E-MOD PUMP HARNESS ASSY. | (EVO) Harnesses | 1 | 1 | 1 | 3 |
| 301-3019-001 | E-MOD ENHANCEMENT HARNESS ASSY. | (EVO) Harnesses | 1 | 1 | 1 | 3 |
| 301-3021-001 | MOTOR/VALVE SYS. HARNESS | (EVO) Harnesses | 1 | 1 | 1 | 3 |
| 301-3022-001 | #1 PUMP SYS. HARNESS | (EVO) Harnesses | 1 | 1 | | |
| 301-3022-002 | #2 PUMP SYS. HARNESS ASSY. | (EVO) Harnesses | | 1 | 1 | 3 |
| 301-3022-003 | #3 PUMP SYS. HARNESS ASSY. | (EVO) Harnesses | | | 1 | 3 |
| 301-3023-001 | SENSOR SYS. HARNESS ASSY. | (EVO) Harnesses | 1 | 1 | 1 | 3 |
| 301-3025-001 | RECEPTACLE PCB HARNESS ASSY., | (EVO) Harnesses | 1 | 1 | 1 | 3 |
| 301-3037-001 | E-MOD RIBBON CABLE HARNESS ASSY. | (EVO) Harnesses | 1 | 1 | 1 | 3 |
| 301-3038-001 | E-MOD CPU PWR., HARNESS ASSY. | (EVO) Harnesses | 1 | 1 | 1 | 3 |
| 301-3039-001 | E-MOD TOUCH PANEL/PWR. HARNESS ASSY. | (EVO) Harnesses | 1 | 1 | 1 | 3 |
| 301-3040-001 | E-MOD USB HARNESS ASSY. | (EVO) Harnesses | 1 | 1 | 1 | 3 |
| 301-3041-001 | ENHANCEMENT SYS. HARNESS, EVO | (EVO) Harnesses | | 1 | 1 | 3 |
| 302-3001-001 | E-MOD TOUCH PANEL EXTENSION HARNESS ASSY. | (EVO) Harnesses | 1 | | | |
| 881-0001-057 | 18/8 IEC POWER CORD, LOCKING, NEMA L5-15P | (EVO) Harnesses | 1 | 1 | 1 | 3 |
| 881-0001-058 | MALE/FEMALE HDMI EXTENSION CABLE, 1.5' | (EVO) Harnesses | 1 | 1 | 1 | 3 |
| 881-0001-059 | MALE/MALE HDMI EXTENSION CABLE, 1.5' | (EVO) Harnesses | 1 | 1 | 1 | 3 |

EVO Harnesses Category



301-3015-001 E-MOD POWER HARNESS ASSY.

A All CleanTech EVO



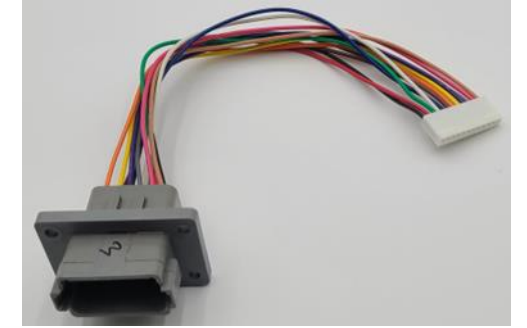
301-3016-001 E-MOD MOTOR/VALVE HARNESS ASSY.

A All CleanTech EVO



301-3017-001 E-MOD SENSOR HARNESS ASSY.

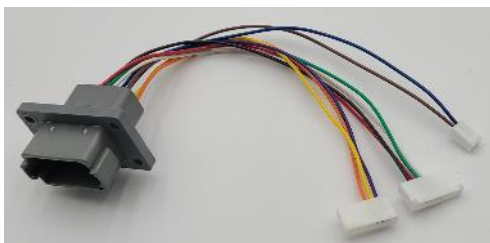
A All CleanTech EVO



301-3018-001 E-MOD PUMP HARNESS ASSY.

A All CleanTech EVO

EVO Harnesses Category



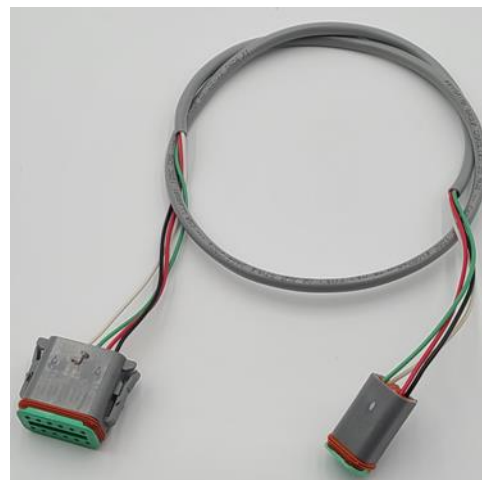
301-3019-001 E-MOD ENHANCEMENT HARNESS ASSY.

| | |
|---|-------------------|
| A | All CleanTech EVO |
|---|-------------------|



301-3021-001 MOTOR/VALVE SYS. HARNESS

| | |
|---|-------------------|
| A | All CleanTech EVO |
|---|-------------------|



301-3022-001 #1 PUMP SYS. HARNESS

| | |
|---|-----------------|
| C | CleanTech EVO-C |
| W | CleanTech EVO-W |



301-3022-002 #2 PUMP SYS. HARNESS ASSY.

| | |
|---|-----------------|
| W | CleanTech EVO-W |
| 1 | CleanTech EVO-1 |
| 3 | CleanTech EVO-3 |

EVO Harnesses Category



301-3022-003 #3 PUMP SYS. HARNESS ASSY.

| | |
|---|-----------------|
| 1 | CleanTech EVO-1 |
| 3 | CleanTech EVO-3 |



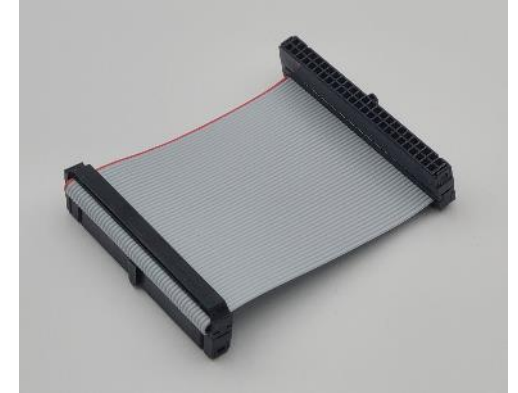
301-3023-001 SENSOR SYS. HARNESS ASSY.

| | |
|---|-------------------|
| A | All CleanTech EVO |
|---|-------------------|



301-3025-001 RECEPTACLE PCB HARNESS ASSY,.

| | |
|---|-------------------|
| A | All CleanTech EVO |
|---|-------------------|



301-3037-001 E-MOD RIBBON CABLE HARNESS ASSY.

| | |
|---|-------------------|
| A | All CleanTech EVO |
|---|-------------------|

EVO Harnesses Category



301-3038-001 E-MOD CPU PWR., HARNESS ASSY.

A All CleanTech EVO



301-3039-001 E-MOD TOUCH PANEL/PWR. HARNESS ASSY.

A All CleanTech EVO



301-3040-001 E-MOD USB HARNESS ASSY.

A All CleanTech EVO



301-3041-001 ENHANCEMENT SYS. HARNESS, EVO

| | |
|----------|-----------------|
| W | CleanTech EVO-W |
| 1 | CleanTech EVO-1 |
| 3 | CleanTech EVO-3 |

EVO Harnesses Category

Image Coming
Soon

302-3001-001 E-MOD TOUCH PANEL
EXTENSION HARNESS ASSY.

C

CleanTech EVO-C



881-0001-057 18/8 IEC POWER CORD,
LOCKING, NEMA L5-15P

A

All CleanTech EVO



881-0001-058 MALE/FEMALE HDMI
EXTENSION CABLE, 1.5'

A

All CleanTech EVO



881-0001-059 MALE/MALE HDMI
EXTENSION CABLE, 1.5'

A

All CleanTech EVO

EVO Mechanical Category

| Item # | Item Description | Category | EVO-C | EVO-W | EVO-1 | EVO-3 |
|--------------|--|------------------|-------|-------|-------|-------|
| 301-2043-001 | RECEPTACLE PIVOT TUBE, ASSY. EVO | (EVO) Mechanical | 2 | 2 | 2 | 6 |
| 301-5047-001 | RECEPTACLE PCB CLAMP, EVO | (EVO) Mechanical | 1 - 2 | 1 - 2 | 2 | 3 - 6 |
| 301-5076-001 | 1.0" PLUMBING CLAMP BOTTOM, EVO | (EVO) Mechanical | 3 | 3 | 3 | 3 |
| 301-5077-001 | 1.0" PLUMBING CLAMP TOP, EVO | (EVO) Mechanical | 3 | 3 | 3 | 3 |
| 301-5078-001 | 1.25" PLUMBING CLAMP BOTTOM, EVO | (EVO) Mechanical | 2 | 2 | 2 | 1 |
| 301-5079-001 | 1.25" PLUMBING CLAMP TOP, EVO | (EVO) Mechanical | 2 | 2 | 2 | 1 |
| 301-5080-001 | SOLENOID PLUMBING CLAMP BOTTOM, EVO | (EVO) Mechanical | 1 | 1 | 1 | 3 |
| 301-5081-001 | SOLENOID PLUMBING CLAMP TOP, EVO | (EVO) Mechanical | 1 | 1 | 1 | 3 |
| 301-5099-001 | DOOR PLUG, EVO | (EVO) Mechanical | | 1 | 1 | 3 |
| 301-5100-001 | BACK PANEL PLUG, EVO | (EVO) Mechanical | | 2 | 4 | 6 |
| 301-5104-001 | RECEPTACLE RETAINER WEDGE | (EVO) Mechanical | 1 | 1 | 1 | 3 |
| 301-5105-001 | RECEPTACLE BODY GASKET, EVO | (EVO) Mechanical | 1-2 | 1-2 | 2 | 3-6 |
| 303-5008-001 | WALL MOUNTING PLATE, WALL, EVO | (EVO) Mechanical | | 1 | | |
| 305-5008-001 | TMV BRKT. STRAP, EVO-3 | (EVO) Mechanical | | | | 1 |
| 911-0013-054 | FLANGE NUT 1-1/2" ID | (EVO) Mechanical | 2 | | | |
| 912-0018-012 | 3" X 1" SST LH FEMALE SLIP HINGE | (EVO) Mechanical | | 1 | 1 | 3 |
| 912-0018-013 | 3" X 1" SST LH MALE SLIP HINGE | (EVO) Mechanical | | 1 | 1 | 3 |
| 912-0022-003 | 1 5/8" ID PIPE NSF LEVELING FOOT | (EVO) Mechanical | | | 4 | 8 |
| 912-0022-013 | 3/4" OD X 5/8" H, 1/4-20 RUBBER BUMPER | (EVO) Mechanical | | | 4 | 12 |
| 913-0120-551 | O-RING BUNA NITRILE .551" | (EVO) Mechanical | 2 | | | |
| 913-0120-614 | ORING .614 ID BUNA 7, 2-016 | (EVO) Mechanical | | 2 | 2 | 6 |
| 913-0122-690 | O-RING EXTERNAL WATER INLET | (EVO) Mechanical | | 2 | 2 | 6 |

EVO Mechanical Category

| Item # | Item Description | Category | EVO-C | EVO-W | EVO-1 | EVO-3 |
|--------------|--|------------------|-------|-------|-------|-------|
| 913-0127-500 | 1/8" X 7.50" ID, O-RING BUNA 70 | (EVO) Mechanical | 1 | 1 | 1 | 1 |
| 913-0350-001 | 3/8" W X 1/8" THICK, EPDM FOAM GASKETING - 50 | (EVO) Mechanical | X | X | X | X |
| 913-0350-002 | 3/8" W X 3/16" THICK, EPDM FOAM GASKETING - 50 | (EVO) Mechanical | X | X | X | X |
| 109-5022-001 | FOOT, 1" DIA. X .5" LONG | (EVO) Mechanical | | | 1 | 3 |



301-2043-001 RECEPTACLE PIVOT TUBE, ASSY. EVO

A All CleanTech EVO



301-5047-001 RECEPTACLE PCB CLAMP, EVO

A All CleanTech EVO



301-5076-001 1.0" PLUMBING CLAMP BOTTOM, EVO

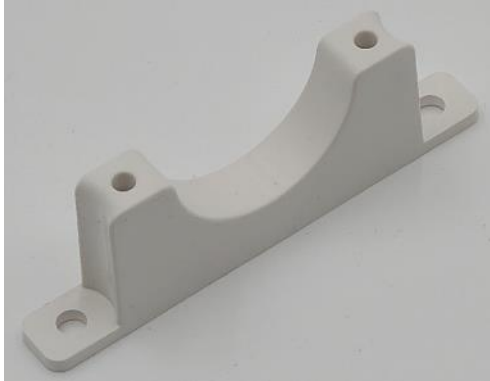
A All CleanTech EVO



301-5077-001 1.0" PLUMBING CLAMP TOP, EVO

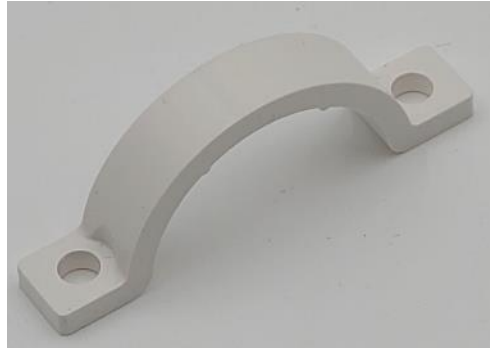
A All CleanTech EVO

EVO Mechanical Category



301-5078-001 1.25" PLUMBING CLAMP
BOTTOM, EVO

A All CleanTech EVO



301-5079-001 1.25" PLUMBING CLAMP
TOP, EVO

A All CleanTech EVO



301-5080-001 SOLENOID PLUMBING
CLAMP BOTTOM, EVO

A All CleanTech EVO



301-5081-001 SOLENOID PLUMBING
CLAMP TOP, EVO

A All CleanTech EVO

EVO Mechanical Category



301-5099-001 DOOR PLUG, EVO

| | |
|---|-----------------|
| W | CleanTech EVO-W |
| 1 | CleanTech EVO-1 |
| 3 | CleanTech EVO-3 |



301-5100-001 BACK PANEL PLUG, EVO

| | |
|---|-----------------|
| W | CleanTech EVO-W |
| 1 | CleanTech EVO-1 |
| 3 | CleanTech EVO-3 |



301-5104-001 RECEPTACLE RETAINER WEDGE

| | |
|---|-------------------|
| A | All CleanTech EVO |
|---|-------------------|



301-5105-001 RECEPTACLE BODY GASKET, EVO

| | |
|---|-------------------|
| A | All CleanTech EVO |
|---|-------------------|

EVO Mechanical Category



303-5008-001 WALL MOUNTING PLATE,
WALL, EVO

| | |
|---|-----------------|
| W | CleanTech EVO-W |
|---|-----------------|



305-5008-001 TMV BRKT. STRAP,
EVO-3

| | |
|---|-----------------|
| 3 | CleanTech EVO-3 |
|---|-----------------|



911-0013-054 FLANGE NUT 1-1/2" ID

| | |
|---|-----------------|
| C | CleanTech EVO-C |
|---|-----------------|



912-0018-012 3" X 1" SST LH FEMALE
SLIP HINGE

| | |
|---|-----------------|
| W | CleanTech EVO-W |
| 1 | CleanTech EVO-1 |
| 3 | CleanTech EVO-3 |

EVO Mechanical Category



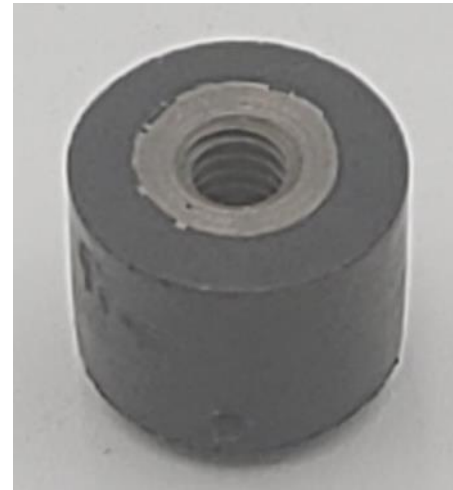
912-0018-013 3" X 1" SST LH MALE SLIP HINGE

| | |
|----------|-----------------|
| W | CleanTech EVO-W |
| 1 | CleanTech EVO-1 |
| 3 | CleanTech EVO-3 |



912-0022-003 1 5/8" ID PIPE NSF LEVELING FOOT

| | |
|---|-----------------|
| 1 | CleanTech EVO-1 |
| 3 | CleanTech EVO-3 |



912-0022-013 3/4" OD X 5/8" H, 1/4-20 RUBBER BUMPER

| | |
|---|-----------------|
| 1 | CleanTech EVO-1 |
| 3 | CleanTech EVO-3 |



913-0120-551 O-RING BUNA NITRILE .551"

| | |
|----------|-----------------|
| C | CleanTech EVO-C |
|----------|-----------------|

EVO Mechanical Category



913-0120-614 ORING .614 ID BUNA 7, 2-016

| | |
|---|-----------------|
| W | CleanTech EVO-W |
| 1 | CleanTech EVO-1 |
| 3 | CleanTech EVO-3 |



913-0122-690 O-RING EXTERNAL WATER INLET

| | |
|---|-----------------|
| W | CleanTech EVO-W |
| 1 | CleanTech EVO-1 |
| 3 | CleanTech EVO-3 |



913-0127-500 1/8" X 7.50" ID, O-RING BUNA 70

| | |
|---|-------------------|
| A | All CleanTech EVO |
|---|-------------------|



913-0350-001 3/8" W X 1/8" THICK, EPDM FOAM GASKETING - 50'

| | |
|---|-------------------|
| A | All CleanTech EVO |
|---|-------------------|

EVO Mechanical Category



913-0350-002 3/8" W X 3/16" THICK,
EPDM FOAM GASKETING - 50'



109-5022-001 FOOT, 1" DIA. X .5" LONG

A All CleanTech EVO

| | |
|---|-----------------|
| 1 | CleanTech EVO-1 |
| 3 | CleanTech EVO-3 |

EVO Motor Category

| Item # | Item Description | Category | EVO-C | EVO-W | EVO-1 | EVO-3 |
|--------------|------------------|-------------|-------|-------|-------|-------|
| 301-3011-001 | MOTOR ASSY. | (EVO) Motor | 1 | 1 | 1 | 3 |



301-3011-001 MOTOR ASSY.

A All CleanTech EVO

EVO Packaging Category

| Item # | Item Description | Category | EVO-C | EVO-W | EVO-1 | EVO-3 |
|--------------|--------------------------|-----------------|-------|-------|-------|-------|
| 302-2000-001 | EVO-C PACKAGING ASSY. | (EVO) Packaging | 1 | | | |
| 303-2000-001 | EVO WALL PACKAGING ASSY. | (EVO) Packaging | | 1 | | |
| 304-2000-001 | EVO-1 PACKAGING ASSY. | (EVO) Packaging | | | 1 | |
| 305-2000-001 | EVO-3 PACKAGING ASSY. | (EVO) Packaging | | | | 1 |



302-2000-001 EVO-C PACKAGING ASSY.



303-2000-001 EVO WALL PACKAGING ASSY.



304-2000-001 EVO-1 PACKAGING ASSY.



305-2000-001 EVO-3 PACKAGING ASSY.



EVO Plumbing Category

| Item # | Item Description | Category | EVO-C | EVO-W | EVO-1 | EVO-3 |
|--------------|---|----------------|-------|-------|-------|-------|
| 301-2013-001 | DONUT ASSY. | (EVO) Plumbing | | 2 | 2 | 6 |
| 301-2038-001 | P-TRAP ASSY., EVO | (EVO) Plumbing | 1 | 1 | 1 | |
| 301-2039-001 | RETROFIT WATER HAMMER ARRESTOR ASSY. EVO | (EVO) Plumbing | X | X | X | X |
| 302-2007-001 | DONUT ASSY., EVO-C | (EVO) Plumbing | 2 | | | |
| 910-6222-004 | 1/4" OD PUSH TO LOCK, BULKHEAD, PANEL MOUN | (EVO) Plumbing | | | 1 | 3 |
| 910-6235-004 | 1/4" OD PUSH TO LOCK TEE | (EVO) Plumbing | | | 1 | 3 |
| 910-6280-404 | 1/4" PTL STEM X 1/4" PTL FEMALE 90 DEG. ELBOW | (EVO) Plumbing | | | | 3 |
| 910-6334-402 | 1/4" OD PTL X 1/8" MNPT | (EVO) Plumbing | | | 1 | 3 |
| 910-6337-404 | 1/4" OD PTL X 1/4" MNPT 90 DEG. ELBOW | (EVO) Plumbing | | | 2 | 6 |
| 910-6573-404 | 1/4" OD PTL STEM X 1/4" ID HOSE BARB 90 DEG. EL | (EVO) Plumbing | | | 1 | |
| 910-6578-404 | 1/4" OD PTL STEM X 1/4" HOSE BARB | (EVO) Plumbing | | | 1 | 3 |
| 910-8111-002 | 1/8" MNPT PLUG, DELRIN, SLOT | (EVO) Plumbing | 2 | 2 | 2 | 6 |
| 910-8235-006 | 1/4" ID POLYPRO BARBED TEE | (EVO) Plumbing | | | | 2 |
| 911-0011-005 | 1/4 TUBE BULKHEAD | (EVO) Plumbing | | | 1 | 1 |
| 911-0013-039 | 1/2" ID HOSE WYE CONNECTOR NYLON | (EVO) Plumbing | 1 | 1 | 1 | 3 |
| 911-0013-075 | NOZZLE, #6 FLOW, 1/8" NPT SST, 80 DEG. | (EVO) Plumbing | | | 2 | 6 |
| 911-0013-076 | NOZZLE, #1 FLOW, 1/8" NPT SST, 80 DEG. | (EVO) Plumbing | | | 2 | 6 |
| 911-0013-085 | 1/8" BARBED TUBE TEE - BLACK | (EVO) Plumbing | | | 1 | 3 |
| 911-0013-087 | 1/2" NPT WATER HAMMER ARRESTOR, SIZE A | (EVO) Plumbing | 1 | 1 | 1 | |
| 912-0011-006 | HOSE CLAMP #6 | (EVO) Plumbing | 9 | 9 | 9 | 27 |
| 912-0011-008 | HOSE CLAMP 1 3/4" SST | (EVO) Plumbing | | | | 4 |
| 912-0011-012 | #8 HOSE CLAMP, SST | (EVO) Plumbing | 8 | 8 | 8 | 6 |

EVO Plumbing Category

| Item # | Item Description | Category | EVO-C | EVO-W | EVO-1 | EVO-3 |
|--------------|--|----------------|-------|-------|-------|-------|
| 912-0011-013 | 1/4" SST SPRING TUBING CLAMP | (EVO) Plumbing | 4 | 4 | 4 | 12 |
| 912-0014-002 | SNAPPER CLIP | (EVO) Plumbing | | | | 4 |
| 912-0014-005 | LARGE SNAPPER CLIP | (EVO) Plumbing | | | | 2 |
| 914-2404-000 | 1/4 ID CLEAR FOOD GRADE TUBING | (EVO) Plumbing | | | X | X |
| 914-2404-001 | 1/4 Heavy Wall Clear Food Grade Tubing | (EVO) Plumbing | | | X | X |
| 914-2424-000 | 1/8" CLEAR FOOD GRADE TUBING | (EVO) Plumbing | X | X | X | X |
| 914-2516-000 | 1" ID CLEAR PVC FLEX TUBING | (EVO) Plumbing | | | X | X |
| 914-2704-000 | 1/4" OD PTL RIDGID TUBING | (EVO) Plumbing | | X | X | X |
| 914-2706-000 | 3/8 OD PTL RIGID TUBING | (EVO) Plumbing | | X | X | X |
| 914-2724-128 | 1 1/2" X 8" DRAIN EXTENSION TUBE, BLACK | (EVO) Plumbing | 1 | 1 | 1 | |
| 914-3108-320 | 20" SST BRAIDED FAUCET CONNECTOR 3/8 COMP | (EVO) Plumbing | 2 | 2 | 2 | |
| 914-3108-808 | 1/2" FIP X 1/2" COMP. 20" SST BRAIDED HOSE - INT | (EVO) Plumbing | Intl. | Intl. | Intl. | |
| 914-3408-050 | 1/2 ID REINFORCED FOOD GRADE HOSE PVC | (EVO) Plumbing | X | X | X | X |
| 914-3520-000 | 1 1/4" ID REINFORCED FOOD GRADE HOSE | (EVO) Plumbing | | | | X |
| 914-3908-000 | 1/2" ID, BLACK HOSE, 300 PSI WIP | (EVO) Plumbing | X | X | X | X |
| 914-3909-072 | RED HOSE 6' WATER INLET | (EVO) Plumbing | | | | 1 |
| 914-3910-072 | BLUE HOSE 6' WATER INLET | (EVO) Plumbing | | | | 1 |
| 961-0100-019 | 1/8" HOSE BARB X 1/8" MNPT, PLASTIC CHECK VALVE | (EVO) Plumbing | 1 - 2 | 1 - 2 | 2 | 3 - 6 |
| 961-0100-020 | 1/8" X 1/8" TUBE BARB CHECK VALVE, .087 CP | (EVO) Plumbing | 1 - 2 | 1 - 2 | 2 | 3 - 6 |
| 301-2020-001 | WATER INLET ASSY. H & C | (EVO) Plumbing | 1 | 1 | 1 | |
| 910-8236-008 | 1/2" TUBE UNION 90 DEGREE ELBOW | (EVO) Plumbing | 1 | 1 | 1 | 3 |

EVO Plumbing Category



301-2013-001 DONUT ASSY. (External O-Ring is not included P/N: 913-0122-690)

| | |
|---|-----------------|
| W | CleanTech EVO-W |
| 1 | CleanTech EVO-1 |
| 3 | CleanTech EVO-3 |



301-2038-001 P-TRAP ASSY., EVO

| | |
|---|-----------------|
| C | CleanTech EVO-C |
| W | CleanTech EVO-W |
| 1 | CleanTech EVO-1 |



301-2039-001 RETROFIT WATER HAMMER ARRESTOR ASSY. EVO

| | |
|---|-------------------|
| A | All CleanTech EVO |
|---|-------------------|



302-2007-001 DONUT ASSY., EVO-C

| | |
|---|-----------------|
| C | CleanTech EVO-C |
|---|-----------------|

EVO Plumbing Category



910-6222-004 1/4" OD PUSH TO LOCK, BULKHEAD, PANEL MOUNT

| | |
|---|-----------------|
| 1 | CleanTech EVO-1 |
| 3 | CleanTech EVO-3 |



910-6235-004 1/4" OD PUSH TO LOCK TEE

| | |
|---|-----------------|
| 1 | CleanTech EVO-1 |
| 3 | CleanTech EVO-3 |



910-6280-404 1/4" PTL STEM X 1/4" PTL FEMALE 90 DEG. ELBOW

| | |
|---|-----------------|
| 3 | CleanTech EVO-3 |
|---|-----------------|

EVO Plumbing Category



910-6334-402 1/4" OD PTL X 1/8" MNPT

| | |
|---|-----------------|
| 1 | CleanTech EVO-1 |
| 3 | CleanTech EVO-3 |



910-6337-404 1/4" OD PTL X 1/4" MNPT 90 DEG. ELBOW

| | |
|---|-----------------|
| 1 | CleanTech EVO-1 |
| 3 | CleanTech EVO-3 |



910-6573-404 1/4" OD PTL STEM X 1/4" ID HOSE BARB 90 DEG. ELBOW

| | |
|---|-----------------|
| 1 | CleanTech EVO-1 |
|---|-----------------|



910-6578-404 1/4" OD PTL STEM X 1/4" HOSE BARB

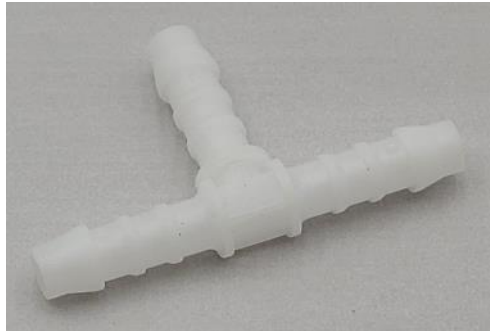
| | |
|---|-----------------|
| 1 | CleanTech EVO-1 |
| 3 | CleanTech EVO-3 |

EVO Plumbing Category



910-8111-002 1/8" MNPT PLUG, DELRIN, SLOT

| | |
|---|-------------------|
| A | All CleanTech EVO |
|---|-------------------|



910-8235-006 1/4" ID POLYPRO BARBED TEE

| | |
|---|-----------------|
| 3 | CleanTech EVO-3 |
|---|-----------------|



911-0011-005 1/4 TUBE BULKHEAD

| | |
|---|-----------------|
| 1 | CleanTech EVO-1 |
| 3 | CleanTech EVO-3 |



911-0013-039 1/2" ID HOSE WYE CONNECTOR NYLON

| | |
|---|-------------------|
| A | All CleanTech EVO |
|---|-------------------|

EVO Plumbing Category



Boot Dip

911-0013-075 NOZZLE, #6 FLOW, 1/8" NPT SST, 80 DEG.

| | |
|---|-----------------|
| 1 | CleanTech EVO-1 |
| 3 | CleanTech EVO-3 |



Sole Clean

911-0013-076 NOZZLE, #1 FLOW, 1/8" NPT SST, 80 DEG.

| | |
|---|-----------------|
| 1 | CleanTech EVO-1 |
| 3 | CleanTech EVO-3 |



911-0013-085 1/8" BARBED TUBE TEE - BLACK

| | |
|---|-----------------|
| 1 | CleanTech EVO-1 |
| 3 | CleanTech EVO-3 |



911-0013-087 1/2" NPT WATER HAMMER ARRESTOR, SIZE A

| | |
|---|-----------------|
| C | CleanTech EVO-C |
| W | CleanTech EVO-W |
| 1 | CleanTech EVO-1 |

EVO Plumbing Category



912-0011-006 HOSE CLAMP #6

A All CleanTech EVO



912-0011-008 HOSE CLAMP 1 3/4"
SST

3 CleanTech EVO-3



912-0011-012 #8 HOSE CLAMP, SST

A All CleanTech EVO



912-0011-013 1/4" SST SPRING TUBING
CLAMP

A All CleanTech EVO

EVO Plumbing Category



912-0014-002 SNAPPER CLIP

| | |
|---|-----------------|
| 3 | CleanTech EVO-3 |
|---|-----------------|



912-0014-005 LARGE SNAPPER CLIP

| | |
|---|-----------------|
| 3 | CleanTech EVO-3 |
|---|-----------------|



914-2404-000 1/4 ID CLEAR FOOD GRADE TUBING

| | |
|---|-----------------|
| 1 | CleanTech EVO-1 |
| 3 | CleanTech EVO-3 |



914-2404-001 1/4 Heavy Wall Clear Food Grade Tubing

| | |
|---|-----------------|
| 1 | CleanTech EVO-1 |
| 3 | CleanTech EVO-3 |

EVO Plumbing Category



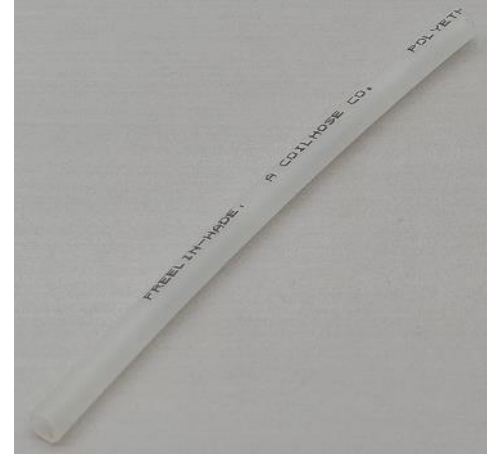
914-2424-000 1/8" CLEAR FOOD GRADE TUBING

| | |
|----------|-------------------|
| A | All CleanTech EVO |
|----------|-------------------|



914-2516-000 1" ID CLEAR PVC FLEX TUBING

| | |
|----------|-----------------|
| 1 | CleanTech EVO-1 |
| 3 | CleanTech EVO-3 |



914-2704-000 1/4" OD PTL RIDGID TUBING

| | |
|----------|-----------------|
| W | CleanTech EVO-W |
| 1 | CleanTech EVO-1 |
| 3 | CleanTech EVO-3 |



914-2706-000 3/8 OD PTL RIDGID TUBING

| | |
|----------|-----------------|
| W | CleanTech EVO-W |
| 1 | CleanTech EVO-1 |
| 3 | CleanTech EVO-3 |

EVO Plumbing Category



914-2724-128 1 1/2" X 8" DRAIN EXTENSION TUBE, BLACK

| | |
|---|-----------------|
| C | CleanTech EVO-C |
| W | CleanTech EVO-W |
| 1 | CleanTech EVO-1 |



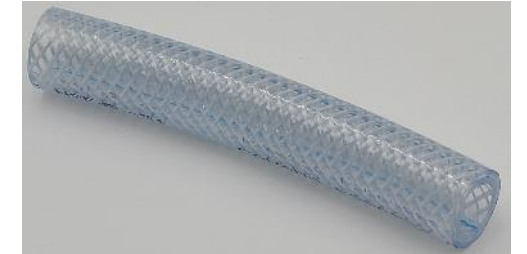
914-3108-320 20" SST BRAIDED FAUCET CONNECTOR 3/8 COMP 1/2 FIP

| | |
|---|-----------------|
| C | CleanTech EVO-C |
| W | CleanTech EVO-W |
| 1 | CleanTech EVO-1 |



914-3108-808 1/2" FIP X 1/2" COMP. 20" SST BRAIDED HOSE - INTERNATIONAL

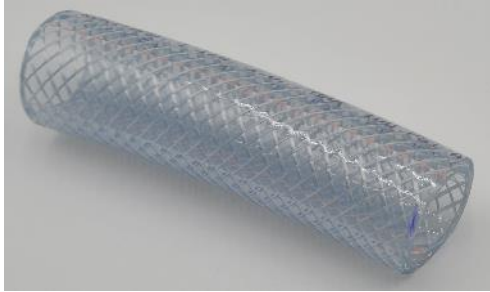
| | |
|---|-----------------|
| C | CleanTech EVO-C |
| W | CleanTech EVO-W |
| 1 | CleanTech EVO-1 |



914-3408-050 1/2 ID REINFORCED FOOD GRADE HOSE PVC

| | |
|---|-------------------|
| A | All CleanTech EVO |
|---|-------------------|

EVO Plumbing Category



914-3520-000 1 1/4" ID REINFORCED
FOOD GRADE HOSE

3

CleanTech EVO-3



914-3908-000 1/2" ID, BLACK HOSE,
300 PSI WIP

A

All CleanTech EVO



914-3909-072 RED HOSE 6' WATER
INLET

3

CleanTech EVO-3



914-3910-072 BLUE HOSE 6' WATER
INLET

3

CleanTech EVO-3

EVO Plumbing Category



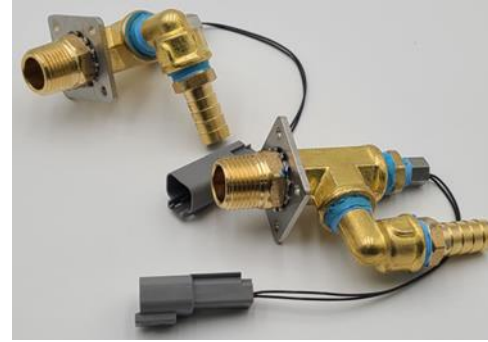
961-0100-019 1/8" HOSE BARB X 1/8" MNPT, PLASTIC CHECK VALVE

| | |
|---|-------------------|
| A | All CleanTech EVO |
|---|-------------------|



961-0100-020 1/8" X 1/8" TUBE BARB CHECK VALVE, .087 CP

| | |
|---|-------------------|
| A | All CleanTech EVO |
|---|-------------------|



301-2020-001 WATER INLET ASSY. H & C

| | |
|---|-----------------|
| C | CleanTech EVO-C |
| W | CleanTech EVO-W |
| 1 | CleanTech EVO-1 |



910-8236-008 1/2" TUBE UNION 90 DEGREE ELBOW

| | |
|---|-------------------|
| A | All CleanTech EVO |
|---|-------------------|

EVO Sensors Category

| Item # | Item Description | Category | EVO-C | EVO-W | EVO-1 | EVO-3 |
|--------------|---|---------------|-------|-------|-------|-------|
| 301-3012-001 | PHOTOEYE E/R ASSY. | (EVO) Sensors | | 1 | 1 | 3 |
| 301-3042-001 | THERMISTOR ASSY. | (EVO) Sensors | 3 | 3 | 3 | 5 |
| 301-3043-001 | CAPACITIVE SENSOR ASSY., EVO SOLE CLEAN | (EVO) Sensors | | | Acc. | Acc. |
| 875-0300-004 | PRESSURE TRANSDUCER, 1/8" NPT, CERAMIC | (EVO) Sensors | 2 | 2 | 2 | 4 |
| 875-0400-027 | PHOTOEYE EMITTER, 18 MM, T18-2, QD | (EVO) Sensors | 1 | 1 | 1 | 3 |
| 875-0400-028 | PHOTOEYE RECEIVER, 18 MM, T18-2, QD | (EVO) Sensors | 1 | 1 | 1 | 3 |

EVO Sensors Category



301-3012-001 PHOTOEYE E/R ASSY.

| | |
|---|-----------------|
| W | CleanTech EVO-W |
| 1 | CleanTech EVO-1 |
| 3 | CleanTech EVO-3 |



301-3042-001 THERMISTOR ASSY.

| | |
|---|-------------------|
| A | All CleanTech EVO |
|---|-------------------|



301-3043-001 CAPACITIVE SENSOR ASSY.,
EVO SOLE CLEAN

| | |
|---|-----------------|
| 1 | CleanTech EVO-1 |
| 3 | CleanTech EVO-3 |



875-0300-004 PRESSURE TRANSDUCER,
1/8" NPT, CERAMIC

| | |
|---|-------------------|
| A | All CleanTech EVO |
|---|-------------------|

EVO Sensors Category



875-0400-027 PHOTOEYE EMITTER, 18 MM, T18-2, QD

A All CleanTech EVO



875-0400-028 PHOTOEYE RECEIVER, 18 MM, T18-2, QD

A All CleanTech EVO

EVO Signs / Graphics Category

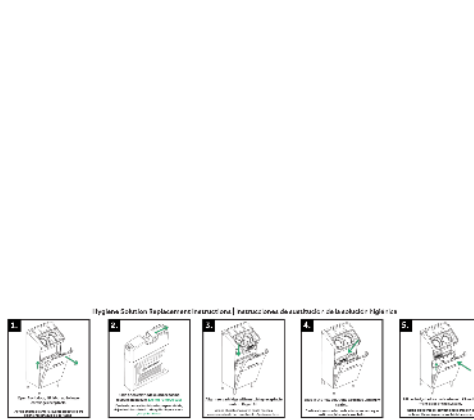
| Item # | Item Description | Category | EVO-C | EVO-W | EVO-1 | EVO-3 |
|--------------|---|------------------------|-------|-------|-------|-------|
| 301-5057-001 | INLAY LOGO PLATE, EVO | (EVO) Signs / Graphics | | 1 | 1 | 3 |
| 301-5085-001 | SOLUTION REPLACEMENT LABEL, EVO | (EVO) Signs / Graphics | 1 | 1 | 1 | 3 |
| 301-5086-001 | UPX SYSTEM SOLUTION LABEL, EVO | (EVO) Signs / Graphics | 1 | 1 | 1 | 3 |
| 301-5087-001 | SELFX SYSTEM SOLUTION LABEL, EVO | (EVO) Signs / Graphics | 1 | 1 | 1 | 3 |
| 301-5088-001 | SYSTEM SUPPORT LABEL, EVO | (EVO) Signs / Graphics | 1 | 1 | 1 | 3 |
| 301-5089-001 | EVO SYS. SPEC LABEL, UNIVERSAL | (EVO) Signs / Graphics | 1 | 1 | 1 | |
| 301-5090-001 | EVO SYS. WATER INLET LABEL, UNIVERSAL | (EVO) Signs / Graphics | | 1 | 1 | 3 |
| 301-5091-001 | EVO SYS. WARNING/FUSE/POWER SWITCH LABEL, | (EVO) Signs / Graphics | 1 | 1 | 1 | 3 |
| 305-5022-001 | EVO THREE SYS. SPEC LABEL | (EVO) Signs / Graphics | | | | 1 |
| 101-5198-001 | HANDWASH SYSTEM INSTRUCTION SIGN 11 x 7 | (EVO) Signs / Graphics | 1 | 1 | 1 | 1 |

EVO Signs / Graphics Category



301-5057-001 INLAY LOGO PLATE, EVO

| | |
|---|-----------------|
| W | CleanTech EVO-W |
| 1 | CleanTech EVO-1 |
| 3 | CleanTech EVO-3 |



301-5085-001 SOLUTION REPLACEMENT LABEL, EVO

| | |
|---|-------------------|
| A | All CleanTech EVO |
|---|-------------------|



301-5086-001 UPX SYSTEM SOLUTION LABEL, EVO

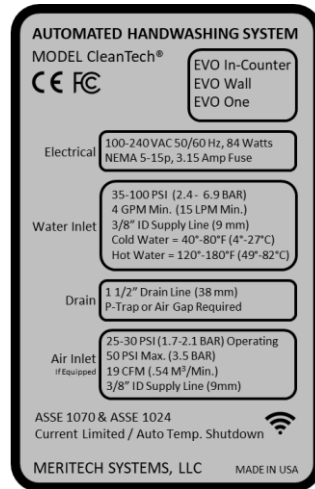
| | |
|---|-------------------|
| A | All CleanTech EVO |
|---|-------------------|



301-5087-001 SELFX SYSTEM SOLUTION LABEL, EVO

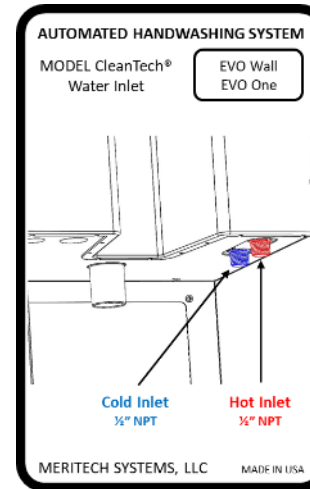
| | |
|---|-------------------|
| A | All CleanTech EVO |
|---|-------------------|

EVO Signs / Graphics Category



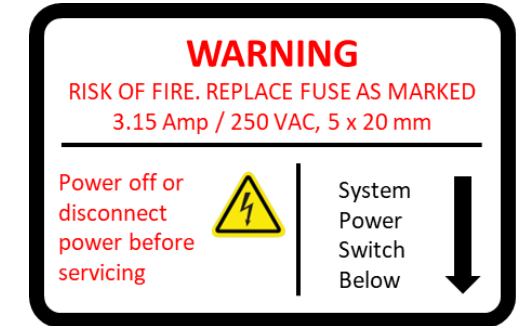
301-5089-001 EVO SYS. SPEC LABEL, UNIVERSAL

| | |
|---|-----------------|
| C | CleanTech EVO-C |
| W | CleanTech EVO-W |
| 1 | CleanTech EVO-1 |



301-5090-001 EVO SYS. WATER INLET LABEL, UNIVERSAL

| | |
|---|-----------------|
| W | CleanTech EVO-W |
| 1 | CleanTech EVO-1 |
| 3 | CleanTech EVO-3 |



301-5091-001 EVO SYS. WARNING/FUSE/POWER SWITCH LABEL, UNIVERSAL

| | |
|---|-------------------|
| A | All CleanTech EVO |
|---|-------------------|

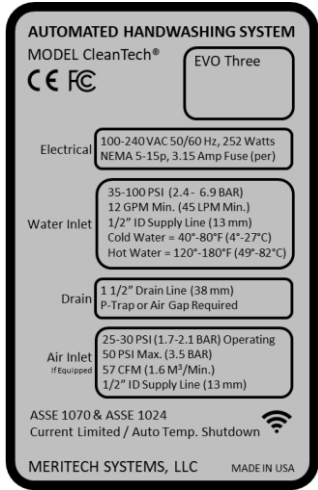
Contact the Meritech Support Team:

Phone: +1(800) 932-7707
 Email: support@meritech.com

301-5088-001 SYSTEM SUPPORT LABEL, EVO

| | |
|---|-------------------|
| A | All CleanTech EVO |
|---|-------------------|

EVO Signs / Graphics Category



305-5022-001 EVO THREE SYS. SPEC LABEL



101-5198-001 HANDWASH SYSTEM INSTRUCTION SIGN 11 x 7



EVO Solutions Handling Category

| Item # | Item Description | Category | EVO-C | EVO-W | EVO-1 | EVO-3 |
|--------------|-----------------------------------|-------------------------|-------|-------|-------|-------|
| 199-6001-005 | CAP PP 28-410 .375" HOLE | (EVO) Solution Handling | S | S | S | S |
| 301-2000-001 | UPX 2 LITER CARTRIDGE TOP ASSY. | (EVO) Solution Handling | S | S | S | S |
| 301-2001-001 | SELFX 2 LITER CARTRIDGE TOP ASSY. | (EVO) Solution Handling | S | S | S | S |
| 301-2021-001 | UP CARTRIDGE RECEPTACLE ASSY. | (EVO) Solution Handling | 1 | 1 | 1 | 3 |
| 301-2021-002 | UP/SC CARTRIDGE RECEPTACLE ASSY. | (EVO) Solution Handling | 1 | 1 | 1 | 3 |
| 301-2022-001 | PIERCE TUBE ASSY. | (EVO) Solution Handling | 1-2 | 1-2 | 1-2 | 3-6 |
| 301-2023-001 | #1 DOSING CHAMBER | (EVO) Solution Handling | 1 | 1 | 1 | 3 |
| 301-2023-002 | #2 DOSING CHAMBER | (EVO) Solution Handling | 1 | 1 | 1 | 3 |
| 301-5107-001 | FOAM DISK SEAL, EVO | (EVO) Solution Handling | S | S | S | S |

EVO Solutions Handling Category



199-6001-005 CAP PP 28-410 .375" HOLE

A All CleanTech EVO



301-2000-001 UPX 2 LITER CARTRIDGE TOP ASSY.

A All CleanTech EVO



301-2001-001 SELFX 2 LITER CARTRIDGE TOP ASSY.

A All CleanTech EVO



301-2021-001 UP CARTRIDGE RECEPTACLE ASSY.

A All CleanTech EVO

EVO Solutions Handling Category



301-2021-002 UP/SC CARTRIDGE RECEPTACLE ASSY.

A All CleanTech EVO



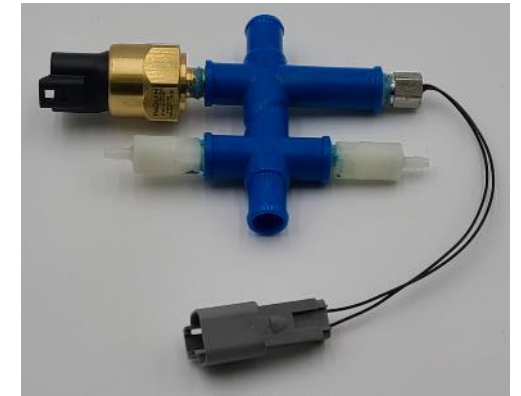
301-2022-001 PIERCE TUBE ASSY.

A All CleanTech EVO



301-2023-001 #1 DOSING CHAMBER

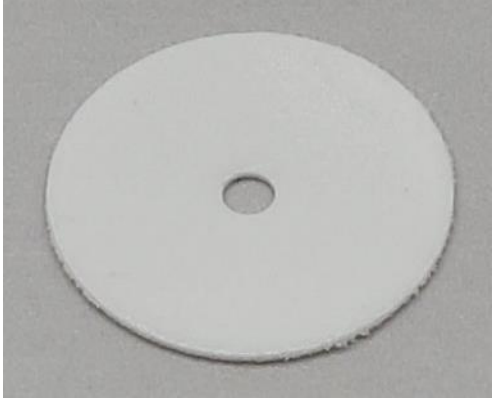
A All CleanTech EVO



301-2023-002 #2 DOSING CHAMBER

A All CleanTech EVO

EVO Solutions Handling Category



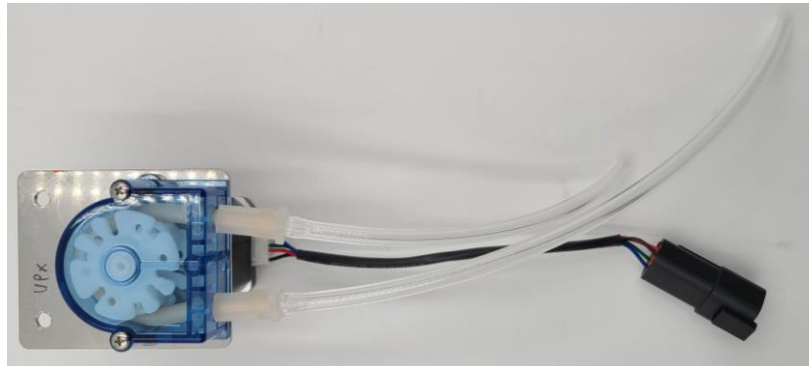
301-5107-001 FOAM DISK SEAL, EVO

A

All CleanTech EVO

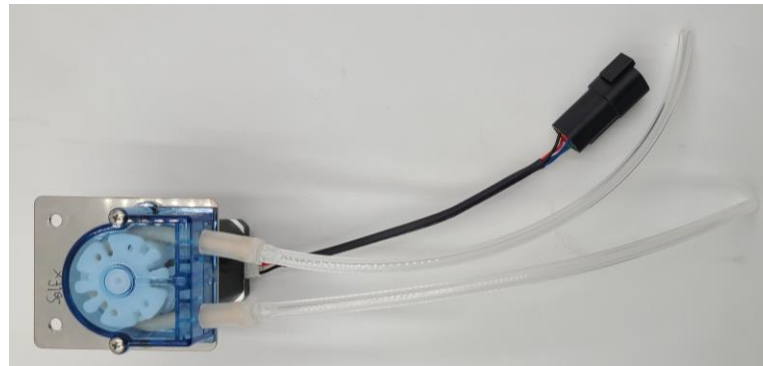
EVO Solutions Pump Category

| Item # | Item Description | Category | EVO-C | EVO-W | EVO-1 | EVO-3 |
|--------------|-------------------------------|---------------------|-------|-------|-------|-------|
| 301-2045-001 | SOLE CLEAN DOSING PUMP, ASSY. | (EVO) Solution Pump | | | Acc. | Acc. |
| 301-2046-001 | UPX DOSING PUMP ASSY. | (EVO) Solution Pump | 1 | 1 | 1 | 3 |
| 301-2047-001 | SELFX DOSING PUMP ASSY. | (EVO) Solution Pump | 1 | 1 | 1 | 3 |
| 301-2048-001 | BOOT DIP DOSING PUMP ASSY. | (EVO) Solution Pump | | | Acc. | Acc. |
| 961-1400-006 | DOSING PUMP, EVO | (EVO) Solution Pump | OBS | OBS | OBS | OBS |
| 961-1400-007 | 5 MM DOSING PUMP TUBING KIT | (EVO) Solution Pump | | | OBS | OBS |
| 961-1400-008 | 3 MM DOSING PUMP TUBING KIT | (EVO) Solution Pump | OBS | OBS | OBS | OBS |



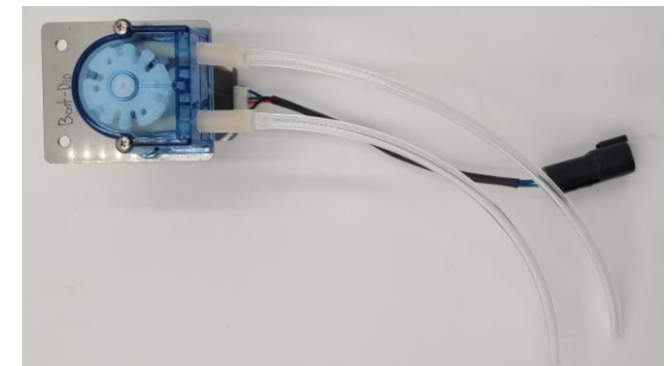
301-2046-001 UPX DOSING PUMP, ASSY.

A All CleanTech EVO



301-2047-001 SELFX DOSING PUMP ASSY.

| | |
|---|-----------------|
| 1 | CleanTech EVO-1 |
| 3 | CleanTech EVO-3 |



301-2048-001 BOOT DIP DOSING PUMP, ASSY.

| | |
|---|-----------------|
| 1 | CleanTech EVO-1 |
| 3 | CleanTech EVO-3 |

EVO Solutions Pump Category



961-1400-006 DOSING PUMP, EVO

| | |
|---|-------------------|
| A | All CleanTech EVO |
|---|-------------------|



961-1400-007 5 MM DOSING PUMP TUBING KIT

| | |
|---|-----------------|
| 1 | CleanTech EVO-1 |
| 3 | CleanTech EVO-3 |



961-1400-008 3 MM DOSING PUMP TUBING KIT

| | |
|---|-------------------|
| A | All CleanTech EVO |
|---|-------------------|

EVO Accessory Category

| Item # | Item Description | Category | EVO-C | EVO-W | EVO-1 | EVO-3 |
|--------------|---|-----------------|-------|-------|-------|-------|
| 301-2036-001 | REPLACEMENT SOLE CLEAN PAN ASSY., EVO | (EVO) Accessory | | | Acc. | Acc. |
| 301-2037-001 | REPLACEMENT BOOT DIP PAN ASSY., EVO | (EVO) Accessory | | | Acc. | Acc. |
| 301-2040-001 | REPLACEMENT BOOT DIP FINGER MAT ASSY. EVO | (EVO) Accessory | | | Acc. | Acc. |
| 301-2041-001 | REPLACEMENT SOLE CLEAN BOTTOM MAT ASSY. EVO | (EVO) Accessory | | | Acc. | Acc. |
| 301-5098-001 | TURNSTILE ESCUTCHEON, EVO-1 | (EVO) Accessory | | | Acc. | |
| 305-2017-001 | REPLACEMENT FOOT PAN WEDGE, ASSY., EVO-3 | (EVO) Accessory | | | | Acc. |
| 912-0028-002 | CAM LOCK WATER RESISTANT | (EVO) Accessory | | Acc. | Acc. | Acc. |
| 109-5055-001 | FOOT CUTOUT MAT, SOLE CLEAN | (EVO) Accessory | | | 1 | 1 |
| 183 | SOLE CLEAN 6-PACK, ABSORBABLE MAT | (EVO) Accessory | | | X | X |
| 184 | SOLE CLEAN 12-PACK, ABSORBABLE MAT | (EVO) Accessory | | | X | X |

EVO Accessory Category



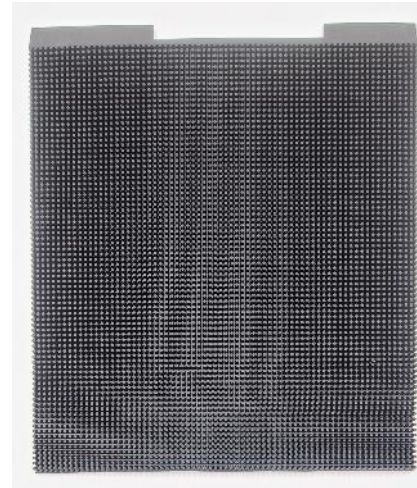
301-2036-001 REPLACEMENT SOLE
CLEAN PAN ASSY., EVO

| | |
|---|-----------------|
| 1 | CleanTech EVO-1 |
| 3 | CleanTech EVO-3 |



301-2037-001 REPLACEMENT
BOOT DIP PAN ASSY., EVO

| | |
|---|-----------------|
| 1 | CleanTech EVO-1 |
| 3 | CleanTech EVO-3 |



301-2040-001 REPLACEMENT BOOT DIP
FINGER MAT ASSY. EVO

| | |
|---|-----------------|
| 1 | CleanTech EVO-1 |
| 3 | CleanTech EVO-3 |



301-2041-001 REPLACEMENT SOLE
CLEAN BOTTOM MAT ASSY. EVO

| | |
|---|-----------------|
| 1 | CleanTech EVO-1 |
| 3 | CleanTech EVO-3 |

EVO Accessory Category



301-5098-001 TURNSTILE ESCUTCHEON,
EVO-1

| | |
|---|-----------------|
| 1 | CleanTech EVO-1 |
|---|-----------------|



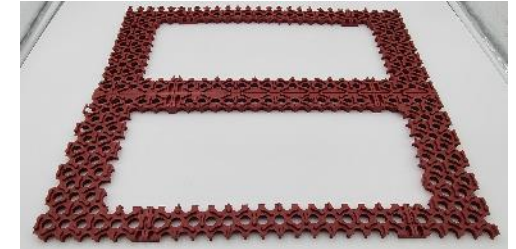
305-2017-001 REPLACEMENT FOOT PAN
WEDGE, ASSY., EVO-3

| | |
|---|-----------------|
| 3 | CleanTech EVO-3 |
|---|-----------------|



912-0028-002 CAM LOCK WATER
RESISTANT

| | |
|---|-----------------|
| W | CleanTech EVO-W |
| 1 | CleanTech EVO-1 |
| 3 | CleanTech EVO-3 |



109-5055-001 FOOT CUTOUT MAT,
SOLE CLEAN

| | |
|---|-----------------|
| 1 | CleanTech EVO-1 |
| 3 | CleanTech EVO-3 |

EVO Accessory Category



183 SOLE CLEAN 6-PACK, ABSORBABLE MAT

| | |
|---|-----------------|
| 1 | CleanTech EVO-1 |
| 3 | CleanTech EVO-3 |



184 SOLE CLEAN 12-PACK, ABSORBABLE MAT

| | |
|---|-----------------|
| 1 | CleanTech EVO-1 |
| 3 | CleanTech EVO-3 |